

LAND CORNER RECORDATION CERTIFICATE
Filing Requirement of Act 74, Mich. P.A. 1970

\$ 9.00 MISCELLANEOUS RECORDING
\$ 2.00 REMONUMENTATION
27 JUL 95 3:32 P.M. RECEIPT# 1409
PAID RECORDED - OAKLAND COUNTY
LYNN D. ALLEN, CLERK/REGISTER OF DEEDS

For corners in

Oakland
(County)

Located in: Addison Corner Code #
Township

1. Public Land Survey	T	5N	R	11E	C-10
	T		R		
	T		R		
	T		R		
2. Property Controlling in Section	S		T		R
	S		T		R
3. Miscellaneous Property in Sec.	S		T		R
	S		T		R

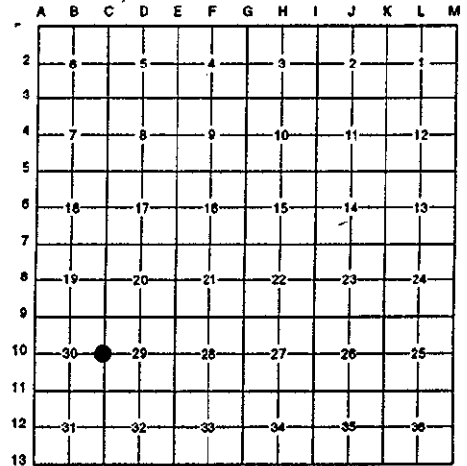
Compliance with
ACT 345, P.A. 1990

APPROVED ON: June 6-19-95
OAKLAND COUNTY REMONUMENTATION
PEER GROUP COMMITTEE
Register of Deeds Stamp & File Number

- 4. Lot No. _____, Recorded Plat _____
- 5. Private Claims _____

I, Randy Kolehouse, in a field survey on May 12 19 95, do hereby certify that under requirements of P.A. 74 Michigan P.A. of 1970, the corner points mentioned in lines 1 and 2 above were in conformance with regulations and rules therefore as required in the current manual of survey instructions of the United States Department of the interior, Bureau of Land Management or by a decree of a Court of Law and/or that the corner points mentioned in lines 3, 4 and 5 above were in conformance with the rules of the Michigan Board of Land Surveyors or by a Decree of a Court of Law; established, re-established, monumented, re-monumented, recovered, found as expressed below:

NOTE: Not more than 4 corners, all in the same town and range, may be recorded on this certificate.



A. Description of original monument and accessories and/or subsequent restoration:

C-10	1817	Wampler	G.L.O.	Set Post
		O.C.R.C.	File #49	Stone & Iron Post
	1886	Cooley	Book 3, Page 192	Tile?
	1973	Jones	L.C.R.C. L. 6124 P. 218	3/8" Iron in Gravel Road
	1974	Buckerfield	Unrecorded Survey	1/2" Iron Bar
	1974	Kennedy	Cert. Survey L. 6414 P. 23-29	1/2" Iron
	1977	Buckerfield	L.C.R.C. L. 6877 P. 559	1/2" Iron Bar in Gravel Road
	1977	Buckerfield	Cert. Survey L. 9229 P. 769	1/2" Iron Bar in Gravel Road

See back for continuation.

B. Description of corner evidence found and/or method applied in restoring or reestablishing corner:

C-10 Found a 1/2" rebar in the C/L of Hosner Road (gravel). In line with a stone wall to the West which checks witnesses from O.C.R.C. corner with records and witness shown in several Cert. Surveys and L.C.R.C.'s shown above.

Buckerfield Survey 1974	Kennedy L.C.R.C. L. 8132 P. 541
Lot Split in NW 1/4 Sec. 29	S 45° E 35.78' 17" Oak
N 30° E 40.81' N/W #17623 W/S 20" Oak	N 20° E 40.75 22" Oak
East 19.32 N/W #17623 N/S 8' Oak	
S 20° E 35.87' N/W #17623 N/S 18" Oak	

Ward L.C.R.C. L. 13490 P. 478 1993
 East 19.47' D.H. Nail N Face 10" Oak
 S 45° E 35.78' Nail in 17" Oak
 West 18.41' Nail in 9" Maple
 N 20° E 41.11' Nail in 22" Oak

C. Description of monument for corner and accessories established to perpetuate locating the position of the corner:

C-10 Replaced the 1/2" rebar with a 5/8" x 24" rebar with brass cap stamped "Oakland County Remonumentation P.S. #25854."

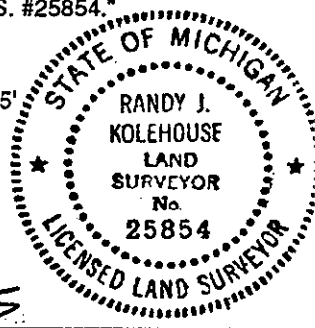
- PK Nail & Tag Stamped "Oakland Co. Remonumentation P.S. #25854" in NW Face 24" Oak N 35° E 41.05'
- PK Nail & Tag Stamped "Oakland Co. Remonumentation P.S. #25854" in N Face 10" Triple (Tree) S 80° E 19.35'
- PK Nail & Tag Stamped "Oakland Co. Remonumentation P.S. #25854" in E Face 24" Oak S 25° E 35.78'
- PK Nail & Tag Stamped "Oakland Co. Remonumentation P.S. #25854" in S Face 9" Oak N 75° W 18.33'

The selected location is accepted by the Contractor and is generally accepted by professional surveyors as the best available evidence of the position of the original corner.

Signed by Randy Kolehouse Date 7/14/95

EARTH TECH

Surveyor's Michigan License No. 25854



*9.00
2.00 ent
fil*

LISEP 15550 PG 250

Part "A" Continued

1977	Nowak	Cert. Survey L. 7115 P. 501-504 and Amended in L. 7235 P. 95	Iron
1978	Buckerfield	Unrecorded Survey	
1982	Kennedy	L.C.R.C. L. 8132 P. 541	Found 1/2" Iron Rod
1989	Isaacs, Jr.	Cert. Survey L. 11006 P. 98 & 99 and L.C.R.C. #11006 P. 100	Found 1/2" Iron Rod
1989	Kennedy	Unrecorded Survey	1/2" Iron Rod
1989	Buckerfield	Unrecorded Survey	
1989	Buckerfield	L.C.R.C. L. 11138 P. 755	1/2" Iron
1991	Buckerfield	Unrecorded Survey	1/2" Bar
1993	Ward	L.C.R.C. L. 13490 P. 478	1/2" Iron Rod