

LAND CORNER RECORDATION CERTIFICATE
Filing Requirement of Act 74, Mich. P.A. 1970

7.00 MISCELLANEOUS RECORDING
2.00 REMONUMENTATION
27 JUL 95 3:53 P.M. RECEIPT# 1409
PAID RECORDED - OAKLAND COUNTY
LYNN D. ALLEN, CLERK/REGISTER OF DEEDS

For corners in
Oakland
(County)

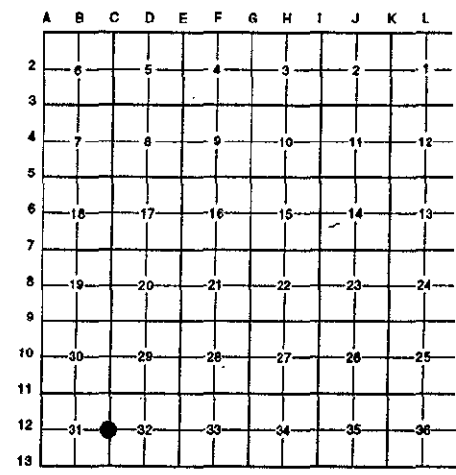
Located in: Addison Corner Code #
Township

- 1. Public Land Survey T 5N R 11E C-12
2. Property Controlling in Section S T R
3. Miscellaneous Property in Sec. S T R

Compliance with ACT 345, P.A. 1990
APPROVED ON: 6-19-95 Jms
OAKLAND COUNTY REMONUMENTATION PEER GROUP COMMITTEE
Register of Deeds Stamp & File Number

- 4. Lot No. , Recorded Plat
5. Private Claims

I, Randy Kolehouse, in a field survey on May 12 19 95, do hereby certify that under requirements of P.A. 74 Michigan P.A. of 1970, the corner points mentioned in lines 1 and 2 above were in conformance with regulations and rules therefore as required in the current manual of survey instructions of the United States Department of the interior, Bureau of Land Management or by a decree of a Court of Law and/or that the corner points mentioned in lines 3, 4 and 5 above were in conformance with the rules of the Michigan Board of Land Surveyors or by a Decree of a Court of Law; established, re-established, monumented, re-monumented, recovered, found as expressed below:



NOTE: Not more than 4 corners, all in the same town and range, may be recorded on this certificate.

A. Description of original monument and accessories and/or subsequent restoration:

Table with 4 columns: Year, Name, Reference, Monument Type. Includes entries for Wampler, Baldwin, Kennedy, and Ward.

B. Description of corner evidence found and/or method applied in restoring or reestablishing corner:

C-12 Found a 3/4" pipe on the South side of a 10" diameter fence post on a fence that runs East, West & North. This pipe agrees with witnesses of record as shown in L.C.R.C. L. 12730 and L. 13490.

Kennedy Unrecorded Survey 1991 L.C.R.C. L. 13490 P. 480 1995
S 30° E 15.85' PK/W SW Face 15" Oak N 78° W 40.25 PK & Disc. #22445 NE Twin 8"/16" Oak
S 20° W 20.12' PK/W E Face 18" Hickory S 30° E 15.85' PK & W SW 15" Oak
N 15° W 16.78' PK/W SW Face 20" Oak S 20° W 20.12' PK & W E 18" Hickory
N 15° W 16.78' PK & W SW 20" Oak

Handwritten note: 7.00 2.00 P file

C. Description of monument for corner and accessories established to perpetuate locating the position of the corner:

C-12 Replaced the 3/4" pipe with a 4" x 36" concrete monument with brass cap stamped "Oakland County Remonumentation P.S. #25854."

- PK Nail & Tag Stamped "Oakland Co. Remonumentation P.S. #25854" in SW Face 15" Oak S 55° E 15.89'
PK Nail & Tag Stamped "Oakland Co. Remonumentation P.S. #25854" in SE Face 18" Hickory S 36° W 20.00'
PK Nail & Tag Stamped "Oakland Co. Remonumentation P.S. #25854" in NE Face Twin 15" Oak N 75° W 40.25'
PK Nail & Tag Stamped "Oakland Co. Remonumentation P.S. #25854" in W Face 20" Oak N 25° W 16.77'

The selected location is accepted by the Contractor and is generally accepted by professional surveyors as the best available evidence of the position of the original corner.

Signed by Randy J Kolehouse Date 7/14/95
EARTH TECH
Surveyor's Michigan License No. 25854

