

15550pc268

JUL 27 95 136673

\$ 7.00 MISCELLANEOUS RECORDING

LAND CORNER RECORDATION CERTIFICATE \$ 2.00 REMONUMENTATION

Filing Requirement of Act 74, Mich. P.A. 1970 27 JUL 95 3:34 P.M. RECEIPT# 140B PAID RECORDED - OAKLAND COUNTY LYNN D. ALLEN, CLERK/REGISTER OF DEEDS

For corners in

Table with columns: Oakland (County), Located in: Addison Township, Corner Code #. Rows include Public Land Survey, Property Controlling in Section, Miscellaneous Property in Sec.

Compliance with ACT 345, P.A. 1990

APPROVED ON: 6-19-95 Tans OAKLAND COUNTY REMONUMENTATION PEER GROUP COMMITTEE

Register of Deeds Stamp & File Number

- 4. Lot No. Recorded Plat
5. Private Claims

I, Randy Kolehouse, in a field survey on May 23 19 95, do hereby certify that under requirements of P.A. 74 Michigan P.A. of 1970, the corner points mentioned in lines 1 and 2 above were in conformance with regulations and rules therefore as required in the current manual of survey instructions of the United States Department of the interior, Bureau of Land Management or by a decree of a Court of Law and/or that the corner points mentioned in lines 3, 4 and 5 above were in conformance with the rules of the Michigan Board of Land Surveyors or by a Decree of a Court of Law; established, re-established, monumented, re-monumented, recovered, found as expressed below:

NOTE: Not more than 4 corners, all in the same town and range, may be recorded on this certificate.

A. Description of original monument and accessories and/or subsequent restoration:

E-2 1817 Wampler G.L.O. Set Post
1992 Heil L. 14100 P. 279 Iron Pipe in Pond

B. Description of corner evidence found and/or method applied in restoring or reestablishing corner:

E-2 Found 1/2" rebar in 3' of water, 1' below surface in a pile of rocks. This iron is possibly set inside another pipe. This point agrees with witness by Heil (iron pipe 184.82' West) and tax descriptions for surrounding parcels. This corner as set by the G.L.O. (40 ch.) North of the SW corner of Section 4 fell in a marsh 5 ch. (330 feet) North of the South edge and 10 ch. (660 feet) South of the North edge of marsh.

Dist: E-2 to E-3 = 2640.37' (G.L.O. = 2640') (Tax Rec. = 2641.60')

C. Description of monument for corner and accessories established to perpetuate locating the position of the corner:

E-2 1/2" rebar in small lake. Also set a 4" x 36" concrete monument with brass cap stamped "Oakland County Remonumentation P.S. #25854" on the Section line as reference monument 295.00 feet South of E-2.

1/2" Rebar in Lake

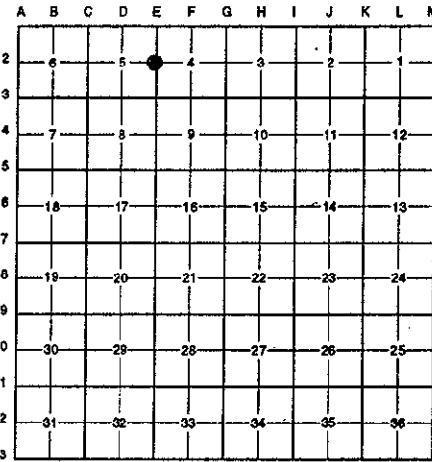
- PK Nail & Tag Stamped "Oakland Co. Remonumentation P.S. #25854" in W Side 12" Oak N 3° E 33.19'
PK Nail & Tag Stamped "Oakland Co. Remonumentation P.S. #25854" in S Side 10" Oak N 82° E 33.19'
PK Nail & Tag Stamped "Oakland Co. Remonumentation P.S. #25854" in NE Side 24" Oak S 42° E 61.81'
PK Nail & Tag Stamped "Oakland Co. Remonumentation P.S. #25854" in N Root 30" Oak S 86° W 43.89'
Reference Monument 295.00 ft. South of E-2
PK Nail & Tag Stamped "Oakland Co. Remonumentation P.S. #25854" in W Face 20" Oak N 51° E 15.51'
PK Nail & Tag Stamped "Oakland Co. Remonumentation P.S. #25854" in W Face 6" Maple N 75° E 31.31'
PK Nail & Tag Stamped "Oakland Co. Remonumentation P.S. #25854" in S Face 6" Twin Maple S 80° E 7.98'
PK Nail & Tag Stamped "Oakland Co. Remonumentation P.S. #25854" in W Face 15" Oak S 4° W 12.76'

The selected location is accepted by the Contractor and is generally accepted by professional surveyors as the best available evidence of the position of the original corner.

Signed by Randy J Kolehouse Date 7/14/95

EARTH TECH

Surveyor's Michigan License No. 25854



Handwritten note: 7.00 2.00 Print file

