

SURVEY &  
REMONUMENTATION

LIBER 14833 PG 143

94-193387

MAY - 1 1995

LAND CORNER RECORDATION CERTIFICATE  
Filing Requirement of Act 74, Mich. P.A. 1970

For corners in  
Oakland

COMMISSION

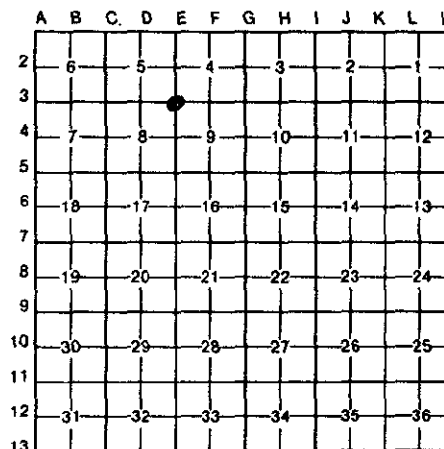
OK - T. SMITH

	Located In:		Corner Code #
	5N	11E	
1. Public Land Survey	T	R	E-3
	T	R	
	T	R	
	T	R	
2. Property Controlling in Section	S	R	
	S	R	
3. Miscellaneous Property in Sec.	S	R	
	S	R	

\$ 7.00 MISCELLANEOUS RECORDING  
\$ 2.00 REMONUMENTATION  
15 JUL 94 7:32 A.M. RECEIPT# 1A  
PAID RECORDED - OAKLAND COUNTY  
LYNN D. ALLEN, CLERK REGISTER OF DEEDS  
ACT 345, P.A. 1990

APPROVED ON: 1-19-94  
OAKLAND COUNTY REMONUMENTATION  
Register of Deeds Stamp # File Number

4. Lot No. \_\_\_\_\_, Recorded Plat \_\_\_\_\_  
5. Private Claims \_\_\_\_\_



Bruce Antcliff November 10 93  
I, \_\_\_\_\_, in a field survey on \_\_\_\_\_, 19 \_\_\_\_\_, do hereby certify that under requirements of P.A. 74, Michigan P.A. of 1970, the corner points mentioned in lines 1 and 2 above were in conformance with regulations and rules therefore as required in the current manual of survey instructions of the United States Department of the Interior, Bureau of Land Management or by a decree of a Court of Law and/or that the corner points mentioned in lines 3, 4 and 5 above were in conformance with the rules of the Michigan Board of Land Surveyors or by a Decree of a Court of Law; established, re-established, monumented, re-monumented, recovered, found as expressed below:

**NOTE: Not more than 4 corners, all in the same town and range, may be recorded on this certificate.**

A. Description of original monument and accessories and/or subsequent restoration:

E-3	GLO Post	L.C.R.C. L.7288 P. 545 (1978) 3" Iron Pipe S 80° E - 9.58' 9" Maple South - 5.43' 13" Maple S 70° W - 12.91' 6" Maple	Survey: P.E. Pangus (10/27/78) Fnd 4" Pipe S 05° E 5.80' 12" Maple East 9.90' 12" Maple S 10° W 13.00' 8" Maple	Survey: Air Land Surveys, Inc. (2/12/91) Fnd 2" Iron Pipe S 85° E 14.62' Nail & Face 8" Maple South 5.51' Nail E Face 16" Maple S 45° W 13.06' Nail E SE Face 8" Maple S 85° W 9.57' Nail in S Face 16" Maple
-----	----------	---	---	--

B. Description of corner evidence found and/or method applied in restoring or reestablishing corner:

*File*

E-3 Found 3" iron pipe in swamp 100' ± E of centerline of Lake George Road near chain link fence, marked with galvanized fence post.  
Checks the following witnesses:

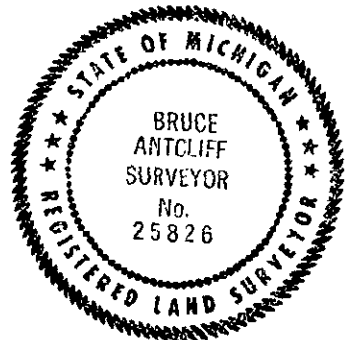
L.C.R.C. L. 7288, P. 545 South 5.43' 13" Maple S 70° W - 12.91' 6" Maple	Survey: P.E. Pangus (10/27/78) S 05° E 5.80' 12" Maple	Survey: Air Land Surveys, inc. (2/12/91) S 85° E 14.62' Nail & Face 8" Maple South 5.51' Nail E Face 16" Maple S 45° W 13.06' Nail E SE Face 8" Maple
--	---	--

C. Description of monument for corner and accessories established to perpetuate locating the position of the corner:

E-3 The selected location is accepted by the Contractor and is generally accepted by professional surveyors as the best available evidence of the position of the original corner.

Filled 3" pipe with concrete. Set 5/8" rebar with standard Oakland County cap in concrete.

- P.K. Nail and Brass Tag in N Face 8" Maple S 85° E - 14.38'
- P.K. Nail and Brass Tag in E Face 16" Maple South 5.52'
- P.K. Nail and Brass Tag in NE Face 12" Maple S 20° E - 28.17'
- P.K. Nail and Brass Tag in NE Face 6" Birch - S 25° W - 28.63'



Signed by Bruce Antcliff 25826  
Surveyor's Michigan License No. \_\_\_\_\_

Date 7-11-94