

LIBER 15550-270

LAND CORNER RECORDATION CERTIFICATE 7.00 MISCELLANEOUS RECORDING
 Filing Requirement of Act 74, Mich. P.A. 1970 \$ 2.00 REMONUMENTATION

For corners in

<u>Oakland</u> (County)	Located in:	Addison Township	Corner Code #
1. Public Land Survey	T <u>5N</u>	R <u>11E</u>	<u>E-11</u>
	T _____	R _____	_____
	T _____	R _____	_____
	T _____	R _____	_____
2. Property Controlling in Section	S _____	T _____	R _____
	S _____	T _____	R _____
3. Miscellaneous Property in Sec.	S _____	T _____	R _____
	S _____	T _____	R _____

27 JUL 95 3:34 P.M. RECEIPT# 1408
 PAID RECORDED - OAKLAND COUNTY
 LYNN D. ALLEN, CLERK/REGISTER OF DEEDS

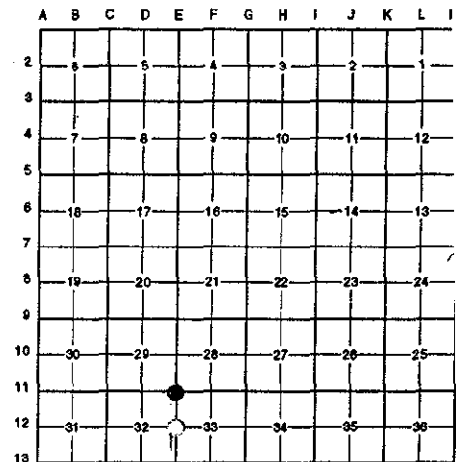
Compliance with
 ACT 345, P.A. 1990

APPROVED ON: 6-19-95 Jams
 OAKLAND COUNTY REMONUMENTATION
 PEER GROUP COMMITTEE

Register of Deeds Stamp & File Number

4. Lot No. _____, Recorded Plat _____
 5. Private Claims _____

I, Randy Kolehouse, in a field survey on May 12 19 95, do hereby certify that under requirements of P.A. 74 Michigan P.A. of 1970, the corner points mentioned in lines 1 and 2 above were in conformance with regulations and rules therefore as required in the current manual of survey instructions of the United States Department of the Interior, Bureau of Land Management or by a decree of a Court of Law and/or that the corner points mentioned in lines 3, 4 and 5 above were in conformance with the rules of the Michigan Board of Land Surveyors or by a Decree of a Court of Law; established, re-established, monumented, re-monumented, recovered, found as expressed below:



NOTE: Not more than 4 corners, all in the same town and range, may be recorded on this certificate.

A. Description of original monument and accessories and/or subsequent restoration:

E-11	1817	Wampler	G.L.O.	Set Post
	1912	Slater	Survey	N/A
	1927	Baldwin	Survey	Found Original Stone/Set Iron Post Over Stone
	1978	Carnahan	Unrecorded	N/A
	1980	Walker	Unrecorded	Iron Found
	1990	Reichert	Unrecorded	Found 1/2" Iron

B. Description of corner evidence found and/or method applied in restoring or reestablishing corner:

E-11 Found 1/2" rebar at the C/L of Lake George Road and 12' North of C/L of Drahner Road (gravel). Iron checks dist. North to E-9 as shown in Baldwin survey M/L (Record = 5266.45' - Measures 5262.2') and dist. East to F-11 as shown in Walker survey.

Walker Unrecorded Survey 1980
 S 45° W 46.15' Nail in 16" Maple
 N 50° W 34.66' Nail in 20" Maple

Measured N to E-10 Cor. = 2627.27'
 Measured N to E-9 Cor. = 5262.17' (Baldwin 5266.45') (G.L.O. = 5280')
 Measured E to F-11 Cor. = 2840.19' (Slater 2832.72') (Baldwin 2842.94') (Walker 2840.25')

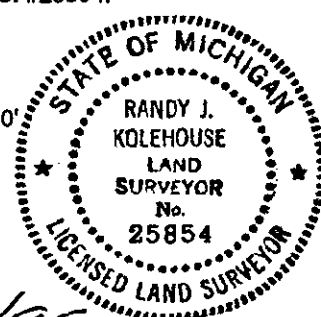
C. Description of monument for corner and accessories established to perpetuate locating the position of the corner:

E-11 Replaced 1/2" rebar with a 5/8" x 24" rebar with brass cap stamped "Oakland County Remonumentation P.S. #25854."

- PK Nail & Tag Stamped "Oakland Co. Remonumentation P.S. #25854" in E Face Util. Pole N 22° E 79.29'
- PK Nail & Tag Stamped "Oakland Co. Remonumentation P.S. #25854" in S Side 15" Elm S 60° E 75.45'
- PK Nail & Tag Stamped "Oakland Co. Remonumentation P.S. #25854" in NW Side 24" Maple S 55° W 45.90'
- PK Nail & Tag Stamped "Oakland Co. Remonumentation P.S. #25854" in S Side 24" Maple N 57° W 34.46'

The selected location is accepted by the Contractor and is generally accepted by professional surveyors as the best available evidence of the position of the original corner.

Signed by Randy J. Kolehouse Date 7/14/95
 EARTH TECH
 Surveyor's Michigan License No. 25854



7.00
 2.00
 file