

JUL 27 1995 136676

LIBER 15550 pg 271

LAND CORNER RECORDATION CERTIFICATE

Filing Requirement of Act 74, Mich. P.A. 1970 \$ 7.00 MISCELLANEOUS RECORDING

For corners in

Oakland (County)

Located in: Addison Township Corner Code #

Table with 4 columns: Item, Township, Range, Section. Includes Public Land Survey, Property Controlling in Section, and Miscellaneous Property in Sec.

\$ 2.00 REMONUMENTATION 27 JUL 95 3:34 P.M. RECEIPT# 1408 PAID RECORDED - OAKLAND COUNTY LYNN D. ALLEN, CLERK/REGISTER OF DEEDS

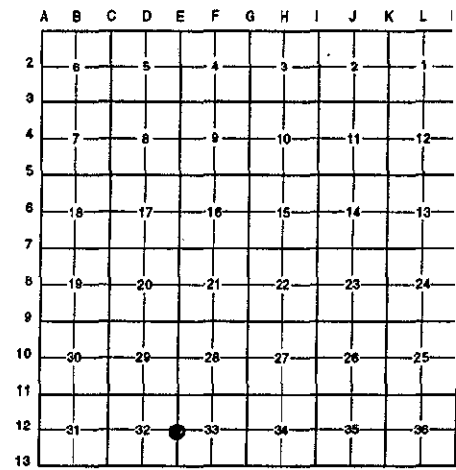
Compliance with ACT 345, P.A. 1990

APPROVED ON: 6-19-95 Tom S OAKLAND COUNTY REMONUMENTATION PEER GROUP COMMITTEE

Register of Deeds Stamp & File Number

4. Lot No. Recorded Plat
5. Private Claims

I, Randy Kolehouse, in a field survey on May 12 19 95, do hereby certify that under requirements of P.A. 74 Michigan P.A. of 1970, the corner points mentioned in lines 1 and 2 above were in conformance with regulations and rules therefore as required in the current manual of survey instructions of the United States Department of the interior, Bureau of Land Management or by a decree of a Court of Law and/or that the corner points mentioned in lines 3, 4 and 5 above were in conformance with the rules of the Michigan Board of Land Surveyors or by a Decree of a Court of Law; established, re-established, monumented, re-monumented, recovered, found as expressed below:



NOTE: Not more than 4 corners, all in the same town and range, may be recorded on this certificate.

A. Description of original monument and accessories and/or subsequent restoration:

Table with 4 columns: Year, Name, Status, Description. Lists monuments from 1817 to 1990 including Wampler, Slater, Baldwin, O.C.R.C., Keating Assoc., McCoy, Walker, and Reichert.

B. Description of corner evidence found and/or method applied in restoring or reestablishing corner:

E-12 Found 5/8" pipe 5' South of C/L of Indian Lake and 2' West of C/L of Lake George Road (gravel) which checks one remaining witness from 1926 Baldwin survey. One witness form O.C.R.C. File #153 (1960) and unrecorded surveys 1979-1990.

Baldwin Unrecorded Survey 1926 NWly 56.5' to 18" W Oak

Reichert Unrecorded Survey N 50° W 56.49' Nail NE Face 32" Oak N 40° E 40.47' Nail NW Face 18" Oak S 80° E 24.40' Nail S Face 24" Oak S 85° W 42.90' Nail N Face Triple 15" Oak

O.C.R.C. File #153 1962 NE 71.65' 6" Hickory (Spike)

McCoy Unrecorded Survey 1979 NNEly 40.11' 14" Oak NWly 56.50' 30" Oak SWly 38.44' 18" Hickory

C. Description of monument for corner and accessories established to perpetuate locating the position of the corner:

E-12 Replaced the 5/8" pipe with a 5/8" x 24" rebar with brass cap stamped "Oakland County Remonumentation P.S. #25854."

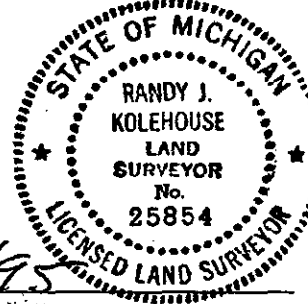
- PK Nail & Tag Stamped "Oakland Co. Remonumentation P.S. #25854" in W Side 12" Hickory N 20° E 71.53'
PK Nail & Tag Stamped "Oakland Co. Remonumentation P.S. #25854" in SW Face 29" Oak S 65° E 24.42'
PK Nail & Tag Stamped "Oakland Co. Remonumentation P.S. #25854" in N Side 18" Triple Oak West 42.91'
PK Nail & Tag Stamped "Oakland Co. Remonumentation P.S. #25854" in E Side Util. Pole N 25° W 68.70'

The selected location is accepted by the Contractor and is generally accepted by professional surveyors as the best available evidence of the position of the original corner.

Signed by Randy Kolehouse Date 7/14/95

EARTH TECH

Surveyor's Michigan License No. 25854



Handwritten note: 7.00 2000 file