

LIBR 15550pc272

COPY
JUL 27 95 136677

LAND CORNER RECORDATION CERTIFICATE \$ 7.00 MISCELLANEOUS RECORDING
Filing Requirement of Act 74, Mich. P.A. 1970 \$ 2.00 REMONUMENTATION

For corners in

Oakland
(County)

Located in: Addison Township Corner Code #

- 1. Public Land Survey T 5N R 11E Corner Code # F-11
T _____ R _____
T _____ R _____
T _____ R _____
- 2. Property Controlling in Section S _____ T _____ R _____
S _____ T _____ R _____
- 3. Miscellaneous Property in Sec. S _____ T _____ R _____
S _____ T _____ R _____

27 JUL 95 3:34 P.M. RECEIPT# 1408
PAID RECORDED - OAKLAND COUNTY
LYNN D. ALLEN, CLERK/REGISTER OF DEEDS

Compliance with
ACT 345, P.A. 1990

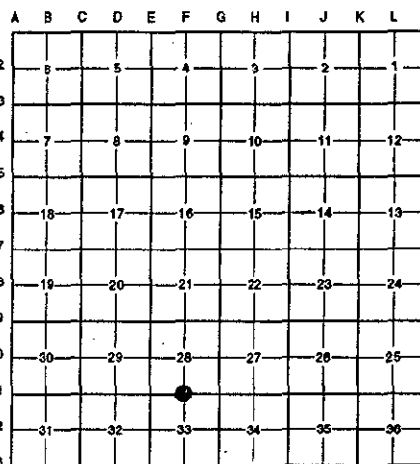
APPROVED ON: 6-19-95 Toms
OAKLAND COUNTY REMONUMENTATION
PEER GROUP COMMITTEE

Register of Deeds Stamp & File Number

- 4. Lot No. _____, Recorded Plat _____
- 5. Private Claims _____

I, Randy Kolehouse, in a field survey on May 11 19 95, do hereby certify that under requirements of P.A. 74 Michigan P.A. of 1970, the corner points mentioned in lines 1 and 2 above were in conformance with regulations and rules therefore as required in the current manual of survey instructions of the United States Department of the Interior, Bureau of Land Management or by a decree of a Court of Law and/or that the corner points mentioned in lines 3, 4 and 5 above were in conformance with the rules of the Michigan Board of Land Surveyors or by a Decree of a Court of Law; established, re-established, monumented, re-monumented, recovered, found as expressed below:

NOTE: Not more than 4 corners, all in the same town and range, may be recorded on this certificate.



A. Description of original monument and accessories and/or subsequent restoration:

- F-11 1817 Wampler G.L.O. Set Post
- 1912 Slater
- 1927 Baldwin Found Iron Pipe Set in Tile
- 1980 Walker Found Iron
- 1989 Bailey Found 1/2" Pipe

B. Description of corner evidence found and/or method applied in restoring or reestablishing corner:

- F-11 Found 1/2" pipe at the C/L of Drahner Road (gravel) with a fence line to the North.

Bailey Unrecorded Survey 1989
S 45° W 23.15' PK in N/S 12" Oak
N 45° W 36.90' PK in S/S 22" Oak

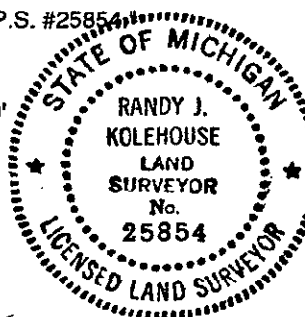
Measured E to SE Cor. 2840.62' (G.L.O. = 2646.60') (Baldwin = 2838.85') (Walker III = 2840.78')
Measured W to SW Cor. = 2840.19' (G.L.O. = 2646.60') (Slater = 2832.72') (Baldwin = 2843.05') (Walker III = 2840.25')

7.00
2.00 R.
fil

C. Description of monument for corner and accessories established to perpetuate locating the position of the corner:

- F-11 Replaced the 1/2" pipe with a 5/8" x 24" rebar with brass cap stamped "Oakland County Remonumentation P.S. #25854"

- PK Nail & Tag Stamped "Oakland Co. Remonumentation P.S. #25854" in S Face 15" Oak N 75° E 32.04'
- PK Nail & Tag Stamped "Oakland Co. Remonumentation P.S. #25854" in W Face 6" Twin Ash S 27 W 14.29'
- PK Nail & Tag Stamped "Oakland Co. Remonumentation P.S. #25854" in S Face 24" Oak N 45° W 36.73'
- PK Nail & Tag Stamped "Oakland Co. Remonumentation P.S. #25854" in N Face 15" Poplar S 45° E 23.25'



The selected location is accepted by the Contractor and is generally accepted by professional surveyors as the best available evidence of the position of the original corner.

Signed by Randy J. Kolehouse Date 7/19/95

EARTH TECH

Surveyor's Michigan License No. 25854