

**SURVEY & REMONUMENTATION**

LIBER **14833** PG **133**

MAY - 1 1995

**LAND CORNER RECORDATION CERTIFICATE**

**COMMISSION Filing Requirement of Act 74, Mich. P.A. 1970**

94 193377  
OK - T. SMITH

For corners in Oakland

(County)	Located In:		Corner Code #
	5N	11E	
1. Public Land Survey	T	R	G-4
	T	R	
	T	R	
	T	R	
2. Property Controlling in Section	S	T	G-4
	S	T	
3. Miscellaneous Property in Sec.	S	T	G-4
	S	T	

\$ 7.00 MISCELLANEOUS RECORDING  
\$ 2.00 REMONUMENTATION  
15 JUL 94 7:30 A.M. RECEIPT PAID  
RECORDED - OAKLAND COUNTY  
LYNN D. ALLEN, CLERK/REGISTER OF DEEDS

Compliance with ACT 345, P.A. 1990

APPROVED ON: 7-19-94  
OAKLAND COUNTY REMONUMENTATION PEER GROUP COMMITTEE  
Register of Deeds Stamp & File Number

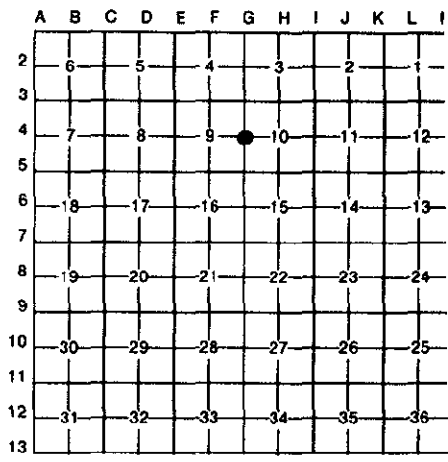
4. Lot No. \_\_\_\_\_, Recorded Plat \_\_\_\_\_  
5. Private Claims \_\_\_\_\_

Bruce Antcliff

November 12

93

I, \_\_\_\_\_, in a field survey on \_\_\_\_\_, 19\_\_\_\_, do hereby certify that under requirements of P.A. 74, Michigan P.A. of 1970, the corner points mentioned in lines 1 and 2 above were in conformance with regulations and rules therefore as required in the current manual of survey instructions of the United States Department of the Interior, Bureau of Land Management or by a decree of a Court of Law and/or that the corner points mentioned in lines 3, 4 and 5 above were in conformance with the rules of the Michigan Board of Land Surveyors or by a Decree of a Court of Law; established, re-established, monumented, re-monumented, recovered, found as expressed below:



**NOTE: Not more than 4 corners, all in the same town and range, may be recorded on this certificate.**

A. Description of corner monument and accessories and/or survey monument:  
Post WNW - 109.7' 20" Elm Fnd 1/2" Iron Rod  
SW - 42.6' NE Corner of Headwall WSW - 83.76' P.K. Twin 11" Ash  
NNE - 38.7' 18" Maple NNW - 63.23' P.K. 8" Elm  
ENE - 15.00' P.K. 5" Ash  
SSW - 115.28' P.K. 10" tree

L.C.R.C. L. 12868, P. 606 (1991)  
Fnd 1/2" Iron Rod  
N 25° E - 16.22' P.K./W E Face 6" Ash  
East - 14.70' P.K./W S Face 4" Ash  
S 50° W 31.43' East Leg of Stop Sign

Survey: L. 12442, P. 533 (12/23/89)  
Fnd 1/2" Iron  
N 49° W 26.74' Nail in Fence Post  
N 37° E 36.72' Nail in 18" Stump  
E 14.63' P.K. in 4" Ash  
N 30° W 62.27' P.K. in 6" Ash

B. Description of corner evidence found and/or method applied in restoring or reestablishing corner:

*700  
800  
file*

G-4 Reset 1/2" Rebar and Cap #25854 at E 1/4, Section 9. Per Witnesses L.C.R.C. L. 12868, P. 606  
Checks the Following Witnesses:

L.C.R.C. L. 9169, P. 205  
NNW - 63.23' P.K. 8" Elm  
ENE - 15.00' P.K. 5" Ash

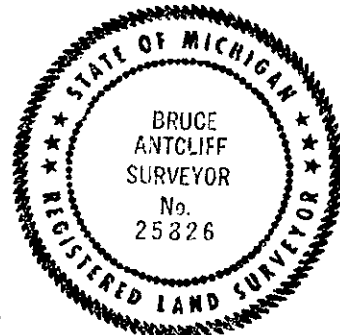
L.C.R.C. L. 12868, P. 606 (1991)  
N 25° E - 16.22' P.K./W E Face 6" Ash  
East - 14.70' P.K. Nail S Face 4" Ash  
S 50° W 31.43' East Leg of Stop Sign

Survey: L. 12442, P. 533 (12/23/89)  
E 14.63' P.K. in S Side 4" Ash

C. Description of monument for corner and accessories established to perpetuate locating the position of the corner:  
G-4 The selected location is accepted by the Contractor and is generally accepted by professional surveyors as the best available evidence of the position of the original corner.

Set 5/8" rebar with standard Oakland County cap.

P.K. Nail and Brass Tag in E Face 8" Ash- N 25° W - 63.03'  
P.K. Nail and Brass Tag in S Face 4" Ash- East - 14.70'  
East leg of stop sign - S 40° W - 32.04'  
P.K. Nail and Brass Tag in SSE Face 12" Oak - West - 83.61'



Signed by Bruce Antcliff  
Surveyor's Michigan License No. 25826

Date 7-11-94