

SURVEY & REMONUMENTATION

MAY - 1 1995

LIBER 14833 PG 131

94 193375

COMMISSION

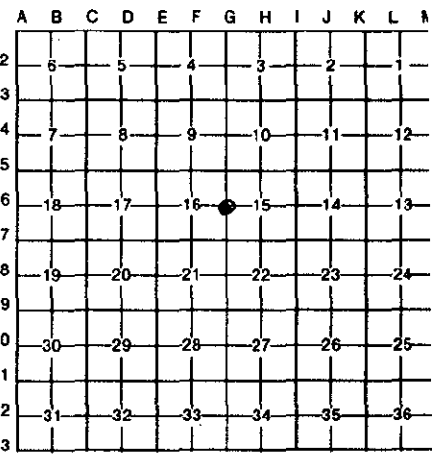
LAND CORNER RECORDATION CERTIFICATE
Filing Requirement of Act 74, Mich. P.A. 1970

OK - T. SMITH

For corners in
Oakland

(County)	Located In:		Corner Code #
	5N	11E	
1. Public Land Survey	T	R	G-6
	T	R	
	T	R	
	T	R	
2. Property Controlling in Section	S	R	
	S	R	
3. Miscellaneous Property in Sec.	S	R	
	S	R	
4. Lot No. _____, Recorded Plat _____			
5. Private Claims _____			

\$ 7.00 MISCELLANEOUS RECORDING
\$ 2.00 REMONUMENTATION
15 JUL 94 7:30 A.M. RECEIPT# 1A
PAID RECORDED - OAKLAND COUNTY
LYNN D. ALLEN, CLERK/REGISTER OF DEEDS
Compliance with
ACT 345, P.A. 1990
APPROVED ON: 7-19-94
OAKLAND COUNTY REMONUMENTATION
Register of Deeds Stamp & File Number



Bruce Antcliff

November 9

93

I, _____, in a field survey on _____, 19 _____, do hereby certify that under requirements of P.A. 74, Michigan P.A. of 1970, the corner points mentioned in lines 1 and 2 above were in conformance with regulations and rules therefore as required in the current manual of survey instructions of the United States Department of the Interior, Bureau of Land Management or by a decree of a Court of Law and/or that the corner points mentioned in lines 3, 4 and 5 above were in conformance with the rules of the Michigan Board of Land Surveyors or by a Decree of a Court of Law; established, re-established, monumented, re-monumented, recovered, found as expressed below:

NOTE: Not more than 4 corners, all in the same town and range, may be recorded on this certificate.

A. Description of County Witnesses and accessories established to perpetuate locating the position of the corner:

- | | | |
|------|-----------------|--------------------------------|
| Post | Iron Pipe | 3/4" Pipe |
| | 15" Oak NE 31.4 | Nail & Washer 48" Oak NE 24.85 |
| | 18" Oak SE 76.1 | Nail & Washer 30" Oak SE 75.86 |
| | | Nail & Washer P. Pole S 29.70 |

L.C.R.C. L. 6205, P. 781 (1973)

3/4" Pipe

Same Witnesses as L.C.R.C. L. 6034, P. 632

Survey L. 7920, P. 171 (1979)

Fnd 3/4" Pipe

Conc. Mon. N 33.00'

Conc. Mon. S 32.89'

Nail & Washer 36" Oak ESE - 75.86'

B. Description of corner evidence found and/or method applied in restoring or reestablishing corner:

G-6 Found 1 1/4" iron pipe at center line of Rowland Road (gravel).
Checks the following witnesses:

County Witnesses
18" Oak SE 76.1'

L.C.R.C. L.6034, P. 632
Nail & Tag 30" Oak SE 75.86'
Nail & Tag DE Pole S 29.70'

L.C.R.C. L. 6205, P. 781
Nail & Tag 30" Oak SE 75.86'

Survey L. 7920, P. 171 (1979)

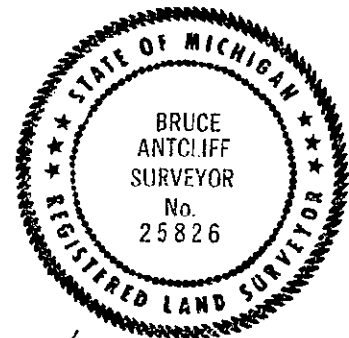
Conc. Mon. N 33.00'

Nail & Washer 36" Oak ESE 75.86'

C. Description of monument for corner and accessories established to perpetuate locating the position of the corner:
G-6 The selected location is accepted by the Contractor and is generally accepted by professional surveyors as the best available evidence of the position of the original corner.

Set 5/8" rebar with standard Oakland County cap.

- Center Line Well Casing (Front of House #912) - N 30° E - 66.40'
- P.K. Nail and Brass Tag in W Face P. Pole - S 10° W - 29.56'
- P.K. Nail and Brass Tag in N Face 10" Oak - S 70° E - 44.81'
- P.K. Nail and Brass Tag in N Face 30" Oak - S 80° E - 75.72'
- Conc Plat Monument - South - 32.85'



Signed by Bruce Antcliff
Surveyor's Michigan License No. 25826

Date 7-11-94