

15550-275

JUL 27 95 136680

LAND CORNER RECORDATION CERTIFICATE
Filing Requirement of Act 74, Mich. P.A. 1970

\$ 7.00 MISCELLANEOUS RECORDING
\$ 2.00 REMONUMENTATION
27 JUL 95 3:35 P.M. RECEIPT# 1408
PAID RECORDED - OAKLAND COUNTY
LYNN D. ALLEN, CLERK/REGISTER OF DEEDS

For corners in

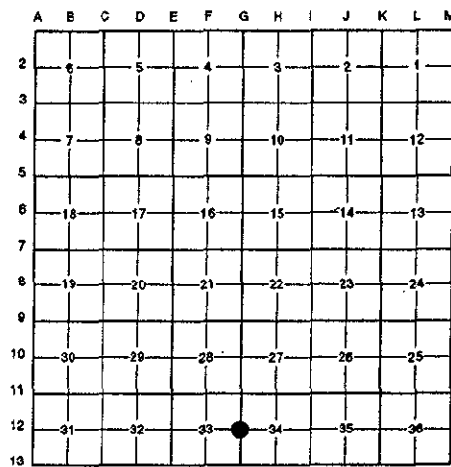
Oakland (County)	Located in:	Addison Township	Corner Code #
1. Public Land Survey	T 5N	R 11E	G-11
	T	R	
	T	R	
	T	R	
2. Property Controlling in Section	S	T	R
	S	T	R
3. Miscellaneous Property in Sec.	S	T	R
	S	T	R

Compliance with
ACT 345, P.A. 1990
APPROVED ON: 6-19-95 TomS
OAKLAND COUNTY REMONUMENTATION
PEER GROUP COMMITTEE

Register of Deeds Stamp & File Number

- 4. Lot No. _____, Recorded Plat _____
- 5. Private Claims _____

I, Randy Kolehouse, in a field survey on May 9 19 95, do hereby certify that under requirements of P.A. 74 Michigan P.A. of 1970, the corner points mentioned in lines 1 and 2 above were in conformance with regulations and rules therefore as required in the current manual of survey instructions of the United States Department of the interior, Bureau of Land Management or by a decree of a Court of Law and/or that the corner points mentioned in lines 3, 4 and 5 above were in conformance with the rules of the Michigan Board of Land Surveyors or by a Decree of a Court of Law; established, re-established, monumented, re-monumented, recovered, found as expressed below:



NOTE: Not more than 4 corners, all in the same town and range, may be recorded on this certificate.

A. Description of original monument and accessories and/or subsequent restoration:

G-11	Year	Name	Description	Monument
	1817	Wampler	G.L.O.	Set Post
	1927	Baldwin	Found Iron Pipe	
	1973	Feldhauser	L.C.R.C. L. 6156 P. 682	Found Iron Rod
	1975	Kostecke	Cert. Survey L. 6506 P. 209	Found Re-rod
	1980	Kennedy	Unrecorded Survey	
	1980	Walker	Unrecorded Survey	Found Iron
	1982	Kennedy	L.C.R.C. L. 8132 P. 541	1/2" Iron Rod
	1985	King	L.C.R.C. L. 9169 P. 209	1/2" Iron Rod
	1989	Baily	Unrecorded Survey	1/2" Iron Rod

B. Description of corner evidence found and/or method applied in restoring or reestablishing corner:

G-11 Found a 1/2" rebar at the C/L of Walker Road and 10' South of C/L of Drahner Road (gravel) which checks the following witnesses.

Kennedy L.C.R.C. L. 8132 P. 541 1982 S 10° W 88.38' 16" Oak	Bailey Unrecorded Survey 1989 N 30° E 44.35' PK SE/S 12" Ash S 10° W 88.45' PK E/S 30" Oak
King L.C.R.C. L. 9169 P. 209 1985 & Cert Survey L. 9169 P. 232-233 PK 10" Twin W. Cherry WSW 72.30' PK 18" W Cherry ENE 84.32'	S 80° W 72.27' PK N/S Twin 18" Cherry N 70° W 67.66' PK S/S Twin 10" Ash

7.00
2.00
JL

Measured West to S 1/4 Cor. = 2840.62' (G.L.O. = 2646.60') (Baldwin = 2838.85') (Walker III = 2840.78')

C. Description of monument for corner and accessories established to perpetuate locating the position of the corner:

G-11 Replaced the 1/2" rebar with a 5/8" x 24" rebar with brass cap stamped "Oakland County Remonumentation P.S. #25854"

- PK Nail & Tag Stamped "Oakland Co. Remonumentation P.S. #25854" in E Face 12" Elm N 30° E 44.25'
- PK Nail & Tag Stamped "Oakland Co. Remonumentation P.S. #25854" in N Face 10" Poplar S 84° E 78.70'
- PK Nail & Tag Stamped "Oakland Co. Remonumentation P.S. #25854" in N Face Twin 15" Cherry S 75° W 71.68'
- PK Nail & Tag Stamped "Oakland Co. Remonumentation P.S. #25854" in S Face 12" Twin Elm N 65° W 67.68'

The selected location is accepted by the Contractor and is generally accepted by professional surveyors as the best available evidence of the position of the original corner.

Signed by Randy J. Kolehouse Date 7/14/95
EARTH TECH
Surveyor's Michigan License No. 25854

