

COPY

JUL 27 95 136681

LIBER 15550 PG 276

LAND CORNER RECORDATION CERTIFICATE \$ 7.00 MISCELLANEOUS RECORDING
Filing Requirement of Act 74, Mich. P.A. 1970 \$ 2.00 REMONUMENTATION

27 JUL 95 3:35 P.M. RECEIPT# 1408
PAID RECORDED - OAKLAND COUNTY
LYNN D. ALLEN, CLERK/REGISTER OF DEEDS

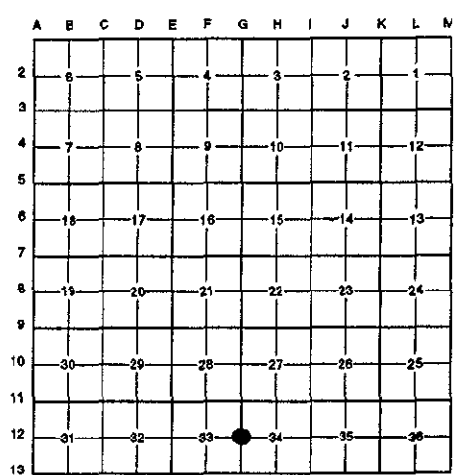
For corners in

<u>Oakland</u> (County)	Located in:	Addison Township	Corner Code #
1. Public Land Survey	T <u>5N</u>	R <u>11E</u>	<u>G-12</u>
	T _____	R _____	_____
	T _____	R _____	_____
	T _____	R _____	_____
2. Property Controlling in Section.	S _____	T _____	R _____
	S _____	T _____	R _____
3. Miscellaneous Property in Sec.	S _____	T _____	R _____
	S _____	T _____	R _____

Compliance with
ACT 345, P.A. 1990
APPROVED ON: 6-19-95 Tom S
OAKLAND COUNTY REMONUMENTATION
PEER GROUP COMMITTEE
Register of Deeds Stamp & File Number

- 4. Lot No. _____, Recorded Plat _____
- 5. Private Claims _____

I, Randy Kolehouse, in a field survey on May 9 19 95, do hereby certify that under requirements of P.A. 74 Michigan P.A. of 1970, the corner points mentioned in lines 1 and 2 above were in conformance with regulations and rules therefore as required in the current manual of survey instructions of the United States Department of the interior, Bureau of Land Management or by a decree of a Court of Law and/or that the corner points mentioned in lines 3, 4 and 5 above were in conformance with the rules of the Michigan Board of Land Surveyors or by a Decree of a Court of Law; established, re-established, monumented, re-monumented, recovered, found as expressed below:



NOTE: Not more than 4 corners, all in the same town and range, may be recorded on this certificate.

A. Description of original monument and accessories and/or subsequent restoration:

G-12 1817	Wampler	G.L.O.	Set Post
1926	Baldwin	Survey Notes	
1927	Baldwin	Survey Notes	Found Iron Pipe
1962	O.C.R.C.	Corner Wits.	Found Iron Pin
1975	Kostecke	Cert. Survey L. 6506 P. 209	Found Re-rod
1980	Walker	Unrecorded Survey	Found Iron
1982	Kennedy	L.C.R.C. L. 8132 P. 541	Found 1/2" Iron Rod

B. Description of corner evidence found and/or method applied in restoring or reestablishing corner:

G-12 Found 1/2" rebar (top 4" bent over) in the C/L of Walker Road (gravel) on line of old fence East which checks witness from Cert. Survey L. 6506 P. 209 and L.C.R.C. L. 8132 P. 541. Also checks two witnesses from 1962 O.C.R.C. records.

Kostecke Cert. Survey L. 6506 P. 209 1975	Kennedy L.C.R.C. L. 8132 P. 541 1982
East 24.58' 6" Hickory	S 35° E 29.27' 18" Oak
SE 29' 16" Oak	S 15° E 41.78' 14" Oak
	N 20° W 68.17' 15" Oak
	N 10° E 92.94' 16" Oak

Walker Measures South 2730.2' to G-13
Baldwin Measures South 2734.4' to G-13

C. Description of monument for corner and accessories established to perpetuate locating the position of the corner:

G-12 Replaced the 1/2" rebar with a 5/8" x 24" rebar with brass cap stamped "Oakland County Remonumentation P.S. #25854."

- PK Nail & Tag Stamped "Oakland Co. Remonumentation P.S. #25854" in W Face 15" Oak N 27° E 41.60'
- PK Nail & Tag Stamped "Oakland Co. Remonumentation P.S. #25854" in W Face 15" Oak S 12° E 41.67'
- PK Nail & Tag Stamped "Oakland Co. Remonumentation P.S. #25854" in E Face 18" Oak S 44° W 47.05'
- PK Nail & Tag Stamped "Oakland Co. Remonumentation P.S. #25854" in E Face 18' Oak N 4° W 68.40'

The selected location is accepted by the Contractor and is generally accepted by professional surveyors as the best available evidence of the position of the original corner.

Signed by Randy J. Kolehouse Date 7/14/95

EARTH TECH

Surveyor's Michigan License No. 25854

