

MAY 16 1995

LIBER 15913 PG 756

COMMISSION

LAND CORNER RECORDATION CERTIFICATE
Filing Requirement of Act 74, Mich. P.A. 1970

For corners in

_____	Located in:	Addison	Corner Code #
(County)		Township	
1. Public Land Survey	T <u>5N</u>	R <u>11E</u>	<u>G-13</u>
	T _____	R _____	_____
	T _____	R _____	_____
	T _____	R _____	_____
2. Property Controlling in Section	S _____	T _____	R _____
	S _____	T _____	R _____
3. Miscellaneous Property in Sec.	S _____	T _____	R _____
	S _____	T _____	R _____

\$ 7.00 MISCELLANEOUS RECORDING
 \$ 2.00 REMONUMENTATION
 29 DEC 95 9:02 A.M. RECEIPT# 44A
 PAID RECORDED - OAKLAND COUNTY
 LYNN D. ALLEN, CLERK/REGISTER OF DEEDS

Compliance with
 ACT 345, P.A. 1990

APPROVED ON: 6-26-95 T.S.
 OAKLAND COUNTY REMONUMENTATION
 PEER GROUP COMMITTEE
 Register of Deeds Stamp & File Number

4. Lot No. _____, Recorded Plat _____
 5. Private Claims _____

I, Randy Kolehouse, in a field survey on May 25 19 95, do hereby certify that under requirements of P.A. 74 Michigan P.A. of 1970, the corner points mentioned in lines 1 and 2 above were in conformance with regulations and rules therefore as required in the current manual of survey instructions of the United States Department of the interior, Bureau of Land Management or by a decree of a Court of Law and/or that the corner points mentioned in lines 3, 4 and 5 above were in conformance with the rules of the Michigan Board of Land Surveyors or by a Decree of a Court of Law; established, re-established, monumented, re-monumented, recovered, found as expressed below:

NOTE: Not more than 4 corners, all in the same town and range, may be recorded on this certificate.

A. Description of original monument and accessories and/or subsequent restoration:

G-13	1817	Wampler	G.L.O.	Set Post
	1926	Baldwin	Set Iron Pipe	
	1962	O.C.R.C.	Corner Wits.	Found Iron Pin & Stone
	1980	Walker	Unrecorded Survey	Found Iron in Monument Box
	1993	Ward	L.C.R.C. L. 15095 P. 022	Oakland County Mon.

B. Description of corner evidence found and/or method applied in restoring or reestablishing corner:

G-13 Found a 2" brass cap on an iron stamped "Oakland County Remonumentation #22445" in a monument box at the C/L of Romeo Road (asphalt) and the C/L of Walker Road (gravel).

O.C.R.C. File #164 1962
 SW 31.50' Spike in 18" Hickory
 SE 60.65' Spike in 36" Pine

Ward L.C.R.C. L. 15095 P. 022 1993
 S 45° W 31.66' Found 60d Nail in NW Face of 30" Hickory
 S 30° E 59.86' Found 60d Nail in N Face of 38" Pine
 N 60° W 84.88' Found 60d Nail in S Face of 12" Pine

(G.L.O. = 2640') (Baldwin = 2829.84') (Walker III = 2769.82' (2768.35' R)
 Measured East to S 1/4 Cor. = 2646.86' (G.L.O. = 2640')

C. Description of monument for corner and accessories established to perpetuate locating the position of the corner:

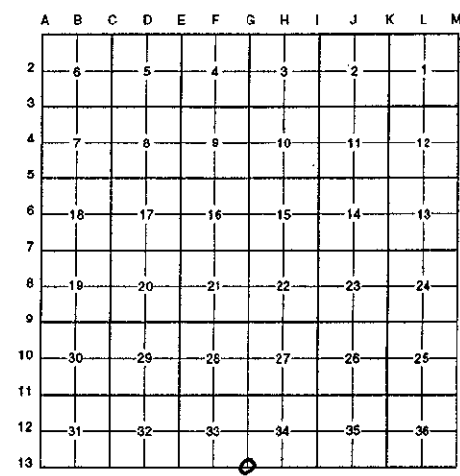
G-13 4" concrete monument with brass cap stamped "Oakland County Remonumentation P.S. #22445."

- PK Nail & Tag Stamped "Oakland Co. Remonumentation P.S. #25854" in W Face 25" Oak N 15° E 103.82'
- PK Nail & Tag Stamped "Oakland Co. Remonumentation P.S. #25854" in N Face 40" Pine S 62° E 59.94'
- PK Nail & Tag Stamped "Oakland Co. Remonumentation P.S. #25854" in NW Face 36" Oak S 55° W 31.67'
- PK Nail & Tag Stamped "Oakland Co. Remonumentation P.S. #25854" in S Face 15" Pine N 64° W 84.83'

The selected location is accepted by the Contractor and is generally accepted by professional surveyors as the best available evidence of the position of the original corner.

Signed by Randy J. Kolehouse Date 12/22/95
 EARTHTECH

Surveyor's Michigan License No. 25854



7.00
 2.00
 Feb

