

COPY
Jul 27 95 136682

LIBER 15550 PG 277
LAND CORNER RECORDATION CERTIFICATE
Filing Requirement of Act 74, Mich. P.A. 1970

\$ 7.00 MISCELLANEOUS RECORDING
\$ 2.00 REMONUMENTATION
27 JUL 95 3:35 P.M. RECEIPT# 1408
PAID RECORDED - OAKLAND COUNTY
LYNN D. ALLEN, CLERK/REGISTER OF DEEDS

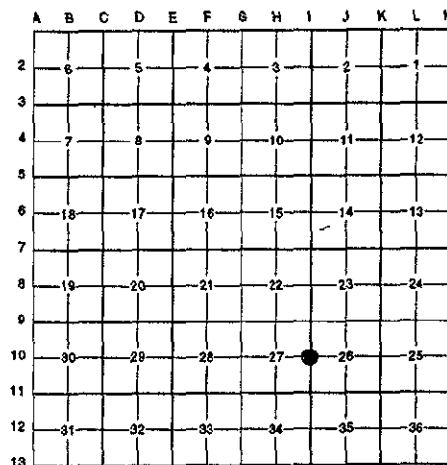
For corners in

Located in:	Addison Township	Corner Code #
1. Public Land Survey	T 5N R 11E	I-10
	T _____ R _____	_____
	T _____ R _____	_____
	T _____ R _____	_____
2. Property Controlling in Section	S _____ T _____ R _____	_____
	S _____ T _____ R _____	_____
3. Miscellaneous Property in Sec.	S _____ T _____ R _____	_____
	S _____ T _____ R _____	_____

Compliance with ACT 345, P.A. 1990
APPROVED ON: 6-19-95 TOMS
OAKLAND COUNTY REMONUMENTATION PEER GROUP COMMITTEE
Register of Deeds Stamp & File Number

4. Lot No. _____, Recorded Plat _____
5. Private Claims _____

I, Randy Kolehouse, in a field survey on May 11 19 95, do hereby certify that under requirements of P.A. 74 Michigan P.A. of 1970, the corner points mentioned in lines 1 and 2 above were in conformance with regulations and rules therefore as required in the current manual of survey instructions of the United States Department of the Interior, Bureau of Land Management or by a decree of a Court of Law and/or that the corner points mentioned in lines 3, 4 and 5 above were in conformance with the rules of the Michigan Board of Land Surveyors or by a Decree of a Court of Law; established, re-established, monumented, re-monumented, recovered, found as expressed below:



NOTE: Not more than 4 corners, all in the same town and range, may be recorded on this certificate.

A. Description of original monument and accessories and/or subsequent restoration:

Year	Survey Name	Survey Description	Monument
I-10 1817	Wampler	G.L.O.	Set Post
1922	Slater	Survey	N/A
1928/32	Baldwin	Survey	N/A
1979	Fenn	L.C.R.C. L. 7722 P. 866	1" Pinch-top Iron
1983	Buckerfield	Unrecorded Survey	Found 1 1/4" Pipe
1988	King	L.C.R.C. L. 10581 P. 812	1" Pinched Pipe
1989	Kennedy	Unrecorded Survey	Found Pinched Iron Pipe
1990	Kobs	L.C.R.C. L. 11501 P. 118	Found 1" Pinched Pipe

B. Description of corner evidence found and/or method applied in restoring or reestablishing corner:

I-10 Found a 1" pinch pipe 5' West of the West edge of a private drive. The point falls about 400' ± South of Rochester Road. 1" pinch pipe checks witnesses from all above surveys and L.C.R.C.'s from 1979 to present. Older surveys have no useful information.

Fenn L.C.R.C. L. 7722 P. 866 1979
South 9.88' NW D.E. Pole

Kobs L.C.R.C. L. 11501 P. 118
NNW 42.43' Nail w/Cap #17623 6" W Cherry
West 17.00' Nail w/Cap #17623 12" W Cherry
South 9.82' Nail w/Cap #17623 P. Pole

Buckerfield Unrecorded Survey 1983
N 10° W 42.15' 5" Cherry N 30° E 41.60'
South 9.89' P. Pole 11" Oak

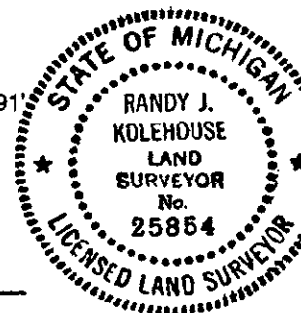
7.00
2.00 Rmt
file

C. Description of monument for corner and accessories established to perpetuate locating the position of the corner:

I-10 Replaced 1" pinch pipe with a 4" x 36" concrete monument with brass cap stamped "Oakland County Remonumentation P.S. #25854."

- PK Nail & Tag Stamped "Oakland Co. Remonumentation P.S. #25854" in W Face 20" Oak N 35° E 40.93'
- PK Nail & Tag Stamped "Oakland Co. Remonumentation P.S. #25854" in NE Face Newer P. Pole S 12° E 10.91'
- PK Nail & Tag Stamped "Oakland Co. Remonumentation P.S. #25854" in N Face 18" Cherry West 17.02'
- PK Nail & Tag Stamped "Oakland Co. Remonumentation P.S. #25854" in E Face 8" Cherry N 7° W 42.40'

The selected location is accepted by the Contractor and is generally accepted by professional surveyors as the best available evidence of the position of the original corner.



Signed by Randy J. Kolehouse Date 7/15/95

Surveyor's Michigan License No. 25854