

\$ 9.00 MISCELLANEOUS RECORDING

\$ 2.00 REMONUMENTATION

27 JUL 95 3:33 P.M. RECEIPT# 140B

PAID RECORDED - OAKLAND COUNTY

LYNN D. ALLEN, CLERK/REGISTER OF DEEDS

LAND CORNER RECORDATION CERTIFICATE

Filing Requirement of Act 74, Mich. P.A. 1970

For corners in

Oakland (County)

Located in: Addison Township Corner Code #

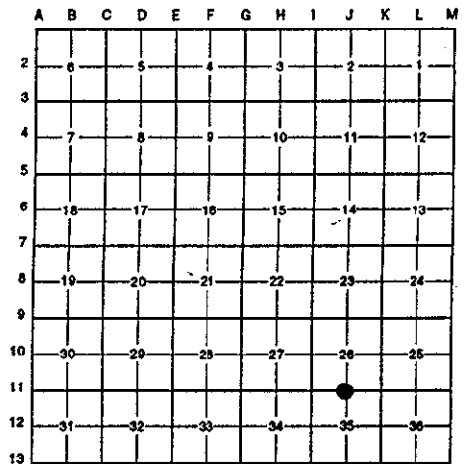
- 1. Public Land Survey T 5N R 11E J-11
2. Property Controlling in Section S T R
3. Miscellaneous Property in Sec. S T R
4. Lot No. Recorded Plat
5. Private Claims

Compliance with ACT 345, P.A. 1990
APPROVED ON: 6-26-95 TAMS
OAKLAND COUNTY REMONUMENTATION PEER GROUP COMMITTEE

Register of Deeds Stamp & File Number

I, Randy Kolehouse, in a field survey on May 9 19 95, do hereby certify that under requirements of P.A. 74 Michigan P.A. of 1970, the corner points mentioned in lines 1 and 2 above were in conformance with regulations and rules therefore as required in the current manual of survey instructions of the United States Department of the Interior, Bureau of Land Management or by a decree of a Court of Law and/or that the corner points mentioned in lines 3, 4 and 5 above were in conformance with the rules of the Michigan Board of Land Surveyors or by a Decree of a Court of Law; established, re-established, monumented, re-monumented, recovered, found as expressed below:

NOTE: Not more than 4 corners, all in the same town and range, may be recorded on this certificate.



A. Description of original monument and accessories and/or subsequent restoration:

Table with 4 columns: J-11, 1817, Wampler Reid, G.L.O. File #141, L.C.R.C. L. 5961 P. 583 and Cert. Survey L. 5953 P. 869, L.C.R.C. L. 6528 P. 434 and Cert. Survey L. 6783 P. 781

- Set Post
Pin in C/L of Road
1" Iron Pin
1/2" Iron Pipe
1/2" Pipe

See back for continuation.

B. Description of corner evidence found and/or method applied in restoring or reestablishing corner:

J-11 Found 1/2" rebar inside a 1/2" pipe at the C/L of Brewer Road (gravel) on line with a fence to the North. Checks one witness from old O.C.R.C. Section corner ties File #141 (15" Oak SW 22.8') (now 36" Oak SW 22.0'). Also checks above surveys and L.C.R.C. 1972 to present.

Kobs L.C.R.C. L. 6528 P. 343 & Cert. Survey L. 6783 P. 781 Buckerfield L.C.R.C. L. 7802 P. 736
PK in 12" Oak NW 17.73' N 17° W 17.73' PK in W Side 8" Oak
PK in 24" Oak SE 25.84' S 50° W 25.82' PK in N Side 24" Oak
PK in 16" Oak SW 37.60' S 55° E 22.02' PK in W Side 30" Oak

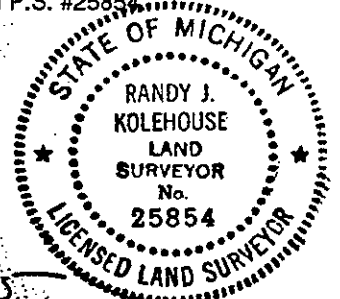
Avey L.C.R.C. L. 13284 P. 761 & Cert. Survey L.C.R.C. L. 13284 P. 747-750
21.86' SSW Form Nail w/Shiner #17623 E Side 36" Oak
25.81' SE PK in N'ly Side 24" Oak
37.59' SW PK in N'ly Side 18" Oak
33.62' N to 1/2" Bar #10868

C. Description of monument for corner and accessories established to perpetuate locating the position of the corner:

J-11 Replaced the 1/2" rebar with a 5/8" x 24" rebar with brass cap stamped "Oakland County Remonumentation P.S. #25854"
PK Nail & Tag Stamped "Oakland Co. Remonumentation P.S. #25854" in N Face 24" Oak S 5° E 25.80'
PK Nail & Tag Stamped "Oakland Co. Remonumentation P.S. #25854" in E Face 36" Oak S 25° W 21.91'
PK Nail & Tag Stamped "Oakland Co. Remonumentation P.S. #25854" in N Face 24" Oak S 70° W 37.58'
PK Nail & Tag Stamped "Oakland Co. Remonumentation P.S. #25854" in S Face 15" Oak N 41° W 23.44'

The selected location is accepted by the Contractor and is generally accepted by professional surveyors as the best available evidence of the position of the original corner.

Signed by Randy J Kolehouse Date 7/14/95
EARTH TECH
Surveyor's Michigan License No. 25854



Handwritten note: 9.00 2.00 Rmt file

LIBER 15550 Pg 260

Part "A" Continued

1979	Lippincott	L.C.R.C. L. 7558 P. 342	Found 1/2" Iron Pipe
1980	Buckerfield	L.C.R.C. L. 7802 P. 736	Found 1/2" Bar
1985 & 1986	Kobs	Cert Survey L. 9418 P. 76 & 77 and L. 9888 P. 276-278	1/2" Pipe
1987	King	Cert. Survey L. 10209 P. 044-049	1/2" Iron Pipe
1988	King	Cert. Survey L. 11488 P. 245-248	(See Above)
1989	Buckerfield	L.C.R.C. L. 10978 P. 188	Found 1/2" Iron Bar
1989	Buckerfield		1/2" Iron Bar
1991	Kennedy	Cert. Survey L. 13327 P. 89-92	1/2" Iron Pipe
1992	Avey	L.C.R.C. L. 13284 P. 761 & Cert. Survey L. 13284 P. 747-750	Found 5/8" Bar
1992	King	Cert. Survey L. 13106 P. 593-607	Found 1/2" Pipe