

MAY - 1 1995

LAND CORNER RECORDATION CERTIFICATE

Compliance with ACT 345, P.A. 1990

Filing Requirement of Act 74, Mich. P.A. 1970

APPROVED ON: 2-2-94 OAKLAND COUNTY REMONUMENTATION PEER GROUP COMMITTEE

For corners in Oakland

COMMISSION

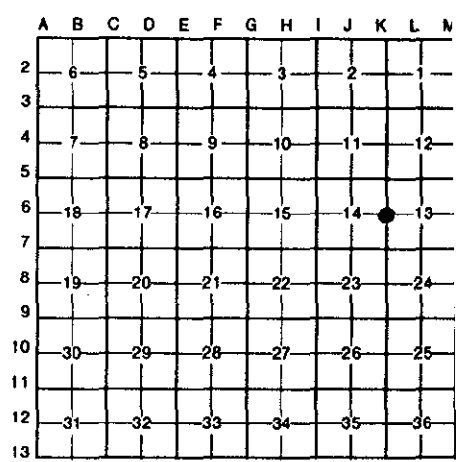
(County)	Located In:		Corner Code #
	5N	11E	
1. Public Land Survey	T	R	K-6
	T	R	
	T	R	
	T	R	
2. Property Controlling in Section	S	T	K-6
	S	T	
3. Miscellaneous Property in Sec.	S	T	K-6
	S	T	

\$ 7.00 MISCELLANEOUS RECORDING
 \$ 2.00 REMONUMENTATION
 15 JUL 94 7:29 A.M. RECEIPT# 1A
 PAID RECORDED - OAKLAND COUNTY
 LYNN D. ALLEN, CLERK/REGISTER OF DEEDS

OK - T. SMITH

Register of Deeds Stamp & File Number

- 4. Lot No. _____, Recorded Plat _____
- 5. Private Claims _____



Bruce Antcliff November 5 93

I, _____, in a field survey on _____, 19 _____, do hereby certify that under requirements of P.A. 74, Michigan P.A. of 1970, the corner points mentioned in lines 1 and 2 above were in conformance with regulations and rules therefore as required in the current manual of survey instructions of the United States Department of the Interior, Bureau of Land Management or by a decree of a Court of Law and/or that the corner points mentioned in lines 3, 4 and 5 above were in conformance with the rules of the Michigan Board of Land Surveyors or by a Decree of a Court of Law; established, re-established, monumented, re-monumented, recovered, found as expressed below:

NOTE: Not more than 4 corners, all in the same town and range, may be recorded on this certificate.

- A. Description of original monument and accessories and/or subsequent restoration:
- | | | |
|---|---|--|
| K-5 GLO County Witnesses
Post Iron Pipe
NW 52.9' 24" Oak
NE 35.8' 8" Oak
SW 72.7' 24" Oak | L.C.R.C. L. 7288, P. 546 (1978)
1" Iron Pipe
N 20° W - 53.02' 34" Oak
S 80° W - 23.68' 8" Oak
N 40° E 25.79' 14" Basswood | L.C.R.C. L. 10709, P. 790 (1988)
1" Iron
N 20° W 53.02' NW 34" Oak
S 80° W 23.68' N/W 8" Oak
N 40° E - 25.79' N/W 14" Basswood |
|---|---|--|

Survey: Kobs Land Surveying (2/26/82)
 Nail in 30" Ash N 30° E 24.0'
 Nail in 46" Oak N 15° W 53.0'
 Nail in 8" Oak N 10° E 64.5'

B. Description of corner evidence found and/or method applied in restoring or reestablishing corner:

K-6 Found 1" iron pipe at intersection of Hagerman Road at Quatro Lane (Pvt.)
 Checks the following witnesses:

County Witnesses NW 52.9' 24" Oak	L.C.R.C. L. 7288, P. 546 (1978) N 20° W - 53.02' 34" Oak N 40° E 25.79' H Basswood
--------------------------------------	--

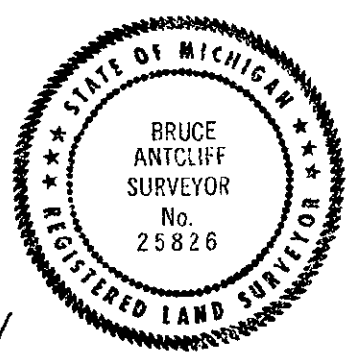
Survey: Kobs Land Surveying (2/26/82)
 Nail in 46" Oak N 15° W 53.0'

C. Description of monument for corner and accessories established to perpetuate locating the position of the corner:

K-6 The selected location of a corner, although not established by an original government survey, is accepted as the best available evidence of the position of the corner.

Set 5/8" rebar with standard Oakland County cap.

- P.K. Nail and Brass Tag in E Face 34" Oak - N 20° W - 52.69'
- P.K. Nail and Brass Tag in NW Face 16" Basswood - N 40° E 25.69'
- P.K. Nail and Brass Tag in SW Face 6" White Pine - S 40° E - 64.94'
- P.K. Nail and Brass Tag in E Face 18" Oak - S 15° W - 161.72'



Signed by Bruce Antcliff 25826

Date 7-11-94

Surveyor's Michigan License No. _____