

**SURVEY &
REMONUMENTATION**

FEB 295019988

LIBER 15234 PG 541

MAY - 1 1995

**LAND CORNER RECORDATION CERTIFICATE
Filing Requirement of Act 74, Mich. P.A. 1970**

OK - T. SMITH

For corners in **COMMISSION**

	<u>Oakland</u> (County)	Located in:	Addison Township	Corner Code #
1. Public Land Survey		T <u>5N</u>	R <u>11E</u>	<u>K-7</u>
		T _____	R _____	_____
		T _____	R _____	_____
		T _____	R _____	_____
2. Property Controlling in Section		S _____	T _____	R _____
		S _____	T _____	R _____
3. Miscellaneous Property in Sec.		S _____	T _____	R _____
		S _____	T _____	R _____

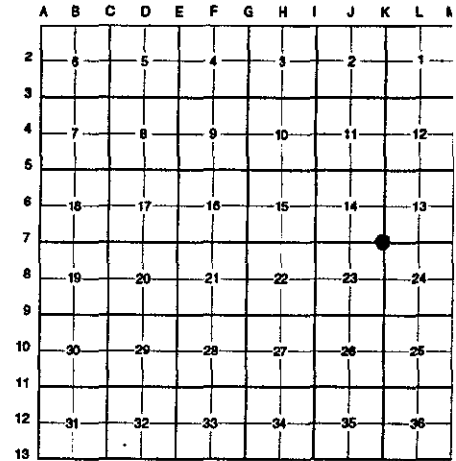
\$ 7.00 MISCELLANEOUS RECORDING
\$ 2.00 REMONUMENTATION
2 FEB 95 7:24 A.M. RECEIPT# 28
PAID RECORDED - OAKLAND COUNTY
LYNN D. ALLEN, CLERK/REGISTER OF DEEDS

Compliance with
ACT 345, P.A. 1990

APPROVED ON: 12-12-94
OAKLAND COUNTY REMONUMENTATION
PEER GROUP COMMITTEE
Register of Deeds Stamp & File Number

4. Lot No. _____, Recorded Plat _____
5. Private Claims _____

I, Randy Kolehouse, in a field survey on July 19 19 94, do hereby certify that under requirements of P.A. 74 Michigan P.A. of 1970, the corner points mentioned in lines 1 and 2 above were in conformance with regulations and rules therefore as required in the current manual of survey instructions of the United States Department of the Interior, Bureau of Land Management or by a decree of a Court of Law and/or that the corner points mentioned in lines 3, 4 and 5 above were in conformance with the rules of the Michigan Board of Land Surveyors or by a Decree of a Court of Law; established, re-established, monumented, re-monumented, recovered, found as expressed below:



NOTE: Not more than 4 corners, all in the same town and range, may be recorded on this certificate.

A. Description of original monument and accessories and/or subsequent restoration:

K-7 Per G.L.O. notes, J. Wampler set a post in 1817.

O.C.R.C. 1962 NW 54.9' Nail in 18" Oak NE 81.5' SW Cor. Barn SE 99.6' NW Cor. Hse.	Kennedy Surveys 1980, 192, 1993 PK in 28" Oak WSW 123.89' PK in 40" Oak WNW 55.32' PK in Trip. 10" W Cherry NW 81.69' Chisseled "X" on Rock NE 72.57'	Kobbs Survey 1984, 1986, 1988-89, 1991 PK in 28" Oak WSW 123.89' PK in 40" Oak WNW 55.32' PK in Trip. 10" W Cherry NW 81.69' Chisseled "X" on Rock NE 72.57'	L.C.R.C. L. 13869 P. 460 1993 WSW 123.82' PK in 28" Oak NNW 55.16' PK in 40" Oak NW 86.56' PK in Tri-10" N Cherry N 60° E 144.85' PK S Side Cherry
---	---	--	--

B. Description of corner evidence found and/or method applied in restoring or reestablishing corner:

K-7 Found 1/2" iron pipe 7' North of S. line of Frick Road at W. line Hagerman and checked following witnesses.

O.C.R.C. 1962 NW 54.9' Nail in 18" Oak	Kobbs Survey 1984, 1986, 1988-89, 1991 PK in 28" Oak WSW 123.89' PK in 40" Oak WNW 55.32' PK in Trip. 10" W Cherry NW 81.69' Chisseled "X" on Rock NE 72.57'	L.C.R.C. L. 13869 P. 460 1993 WSW 123.82' PK in 28" Oak NNW 55.16' PK in 40" Oak NW 86.56' PK in Tri-10" N Cherry N 60° E 144.85' PK S Side Cherry
---	--	--

King Measures East to L-7 2689.44'
King Measures West to J-7 3040.66'
King Measures South to K-8 2669.94'
Kennedy Measures North to K-6 2677.77'

C. Description of monument for corner and accessories established to perpetuate locating the position of the corner:

K-7 Set a 5/8" rebar with brass cap stamped "Oakland County Remonumentation P.S. #25854" in place of found 1/2" iron pipe.

- PK Nail & Tag Stamped "Oakland Co. Remonumentation P.S. #25854" in 28" Oak WSW 123.82'
- PK Nail & Tag Stamped "Oakland Co. Remonumentation P.S. #25854" in 40" Oak NNW 55.16'
- PK Nail & Tag Stamped "Oakland Co. Remonumentation P.S. #25854" in Tri-10" N Cherry NW 81.56'
- PK Nail & Tag Stamped "Oakland Co. Remonumentation P.S. #25854" in S Side Large Clump Cherry N 60°



The selected location is accepted by the Contractor and is generally accepted by professional surveyors as the best available evidence of the position of the original corner.

Signed by Randy J. Kolehouse Date 12/23/94
Surveyor's Michigan License No. 25854