

LAND CORNER RECORDATION CERTIFICATE, Filing Requirement of Act 74, Mich. P.A. 1970

7.00 MISCELLANEOUS RECORDING
2.00 REMONUMENTATION
27 JUL 95 3:35 P.M. RECEIPT# 140B
PAID RECORDED - OAKLAND COUNTY
LYNN D. ALLEN, CLERK/REGISTER OF DEEDS

For corners in

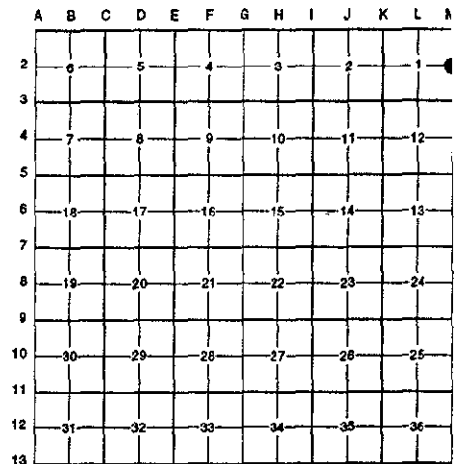
Table with columns: Located in: Addison Township, Corner Code #, and rows for Public Land Survey, Property Controlling in Section, and Miscellaneous Property in Sec.

Compliance with ACT 345, P.A. 1990
APPROVED ON: 6-26-95 Toms
OAKLAND COUNTY REMONUMENTATION PEER GROUP COMMITTEE

Register of Deeds Stamp & File Number

4. Lot No. Recorded Plat
5. Private Claims

I, Randy Kolehouse, in a field survey on May 19 19 95, do hereby certify that under requirements of P.A. 74 Michigan P.A. of 1970, the corner points mentioned in lines 1 and 2 above were in conformance with regulations and rules therefore as required in the current manual of survey instructions of the United States Department of the Interior, Bureau of Land Management or by a decree of a Court of Law and/or that the corner points mentioned in lines 3, 4 and 5 above were in conformance with the rules of the Michigan Board of Land Surveyors or by a Decree of a Court of Law; established, re-established, monumented, re-monumented, recovered, found as expressed below:



NOTE: Not more than 4 corners, all in the same town and range, may be recorded on this certificate.

A. Description of original monument and accessories and/or subsequent restoration:

Table with columns: M-2, 1817, Wampler, G.L.O., Set Post, 1933, O.C.R.C., File #26, 1953, Plat "Secord Lakeview Subdivision No. 27" L.68 P. 31, 1991, Kostecke, Survey, Found Iron Rod, 1993, Kennedy, Survey & Field Notes, Iron

B. Description of corner evidence found and/or method applied in restoring or reestablishing corner:

M-2 Found a 1/2" rebar 4' North of the C/L of Mckail Road (gravel) on line with a fence to the South and North which checks witnesses from both Kostecke & Kennedy Surveys 1991 & 1993. 1933 O.C.R.C. File #26 and Secord Lake Subdivision #27 show stone for corner. Measured East from NE corner Secord Lake Subdivision #27 666.0' ± to found rebar. Record = 670.45'. Dug for stone 4' East of rebar but did not find stone.

Table comparing Kostecke Unrecorded Survey and Kennedy Unrecorded Survey with bearings and distances for PK in trees and faces of Walnut and Elm.

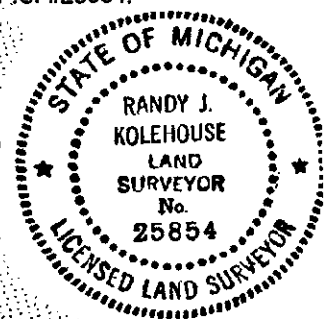
Measures S to SE Cor. = 2675.43' (G.L.O. = 2640') (Kostecke = 2675.46) (Kennedy = 2675.31')

C. Description of monument for corner and accessories established to perpetuate locating the position of the corner:

M-2 Replaced the 1/2" rebar with a 5/8" x 24" rebar with brass cap stamped "Oakland County Remonumentation P.S. #25854."

- List of PK Nail & Tag stamped "Oakland Co. Remonumentation P.S. #25854" with bearings and distances for Walnut and Elm.

The selected location is accepted by the Contractor and is generally accepted by professional surveyors as the best available evidence of the position of the original corner.



Signed by Randy J. Kolehouse Date 7/19/95
EARTH TECH

Surveyor's Michigan License No. 25854