

FEB 22 1996

LAND CORNER RECORDATION CERTIFICATE
Filing Requirement of Act 74, Mich. P.A. 1970

STATE OF MICHIGAN
COUNTY OF OCEANA
RECEIVED FOR RECORD
100642

95 JUL 10 P2:49

For corners in
Oceana
(County)

Located In:

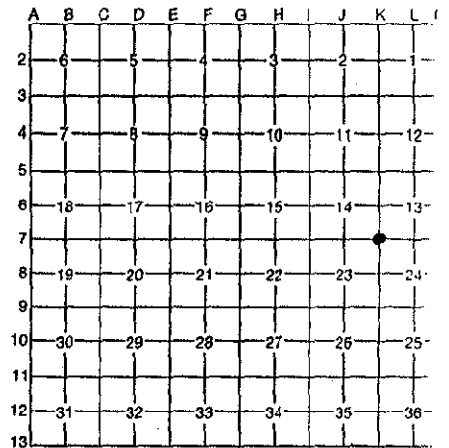
Corner Code #

Table with 3 columns: Survey Type, Located In (T/S), and Corner Code #. Includes rows for Public Land Survey, Property Controlling In Section, and Miscellaneous Property In Section.

Handwritten signature and REGISTER OF DEEDS stamp.

Register of Deeds Stamp & File Number

4. Lot No. , Recorded Plat
5. Private Claims



J. Randolph Hepworth June 14, 1995

I, in a field survey on , 19 do hereby certify that under requirements of P.A. 74, Michigan P.A. of 1970, the corner points mentioned in lines 1 and 2 above were in conformance with regulations and rules therefore as required in the current manual of survey instructions of the United States Department of the Interior, Bureau of Land Management or by a decree of a Court of Law and/or that the corner points mentioned in lines 3, 4 and 5 above were in conformance with the rules of the Michigan Board of Professional Surveyors or by a Decree of a Court of Law: established, re-established, monumented, re-monumented, recovered, found as expressed below:

NOTE: Not more than 4 corners, all in the same town and range, may be recorded on this certificate.

A. Description of original monument and accessories and/or subsequent restoration:

K-7 Corner Common to Sections 13, 14, 23, 24 T13N, R15W GREENWOOD TOWNSHIP

- GLO Set Post 12" Pine N58°W 15.2 5" Beech S42°W 27.7
Book C, Pg 180; HC Salisbury, 1923; Ringer Iron and 2 Stones; 5" Oak N45°E 39.3' 5" Oak N30°W 66.3' 6" Oak S30°W 39.6'
OCRC Witness Book, 12-20-66 (presume to be P Salisbury, C.P. Co. witnesses) 1" Pipe
Tw 10" Oak S50°W 58.25 12" Maple Due E 46.0 14" W Oak N25°W 69.40
C.P. Co. Survey; P Salisbury, 1966: Set 1" Pipe by double proportion
10" Tw Oak S50°W 58.25 12" Maple Due E 46.0 14" W Oak N25°W 69.40

B. Description of corner evidence found and/or method applied in restoring or reestablishing corner

I found a 3/4" pinched Pipe & broken crockery, glass. Intersection of N-S & E-W trail roads is 33' east and 9' south. All OCRC & CP Co witnesses are standing. The 12" Maple recited is actually a R Oak. Measurement ties to L-7, K-7, K-8 & K-9 also confirm that this pipe is the corner established by P Salisbury in 1966.

A comparison of the CP Co. survey with the 1923 HC Salisbury survey of Section 13 shows that distances from W 1/4 to NW to N 1/4 to NE to E 1/4 to SE to S 1/4 all fall within less than 2 feet of the 1923 distances. It appears that P Salisbury found the HC Salisbury, 1923 monuments at the W 1/4, N 1/4 and S 1/4 of Section 13 as the monument descriptions are the same or similar. However, the distance from the S 1/4 to SW Corner of Section 13 is 2669.24, P Salisbury, 1966: and 2640.0, HC Salisbury, 1923.

At 38 feet east and 10 feet south of the CP Co. corner, I found a position that fit the 1923 witness distances to an Oak still standing and two well-rotted stumps. No metallic object was detected. I excavated into the dirt road surface for a diameter of about 10 feet to a depth of 8" to sand sub-soil: No stones found of any consequence. This position, however, is 6.5 feet short of the 1923 dimension of 2640'. The 1923 survey does not give a distance to the W 1/4 corner of Section 13 that would aid in recovery or verification of this corner position. Since all other distances in Section 13 compared to less than 2 feet, I feel that the stumps and Oak discovered that seem to fit the 1923 witness were not in fact HC Salisbury trees, but coincidental. It is possible that the HC Salisbury distance of 2640' is not a true measured distance but an approximation, especially in light of the fact that no distance is recited to the W 1/4 corner of Section 13.

After consideration to all of the above, I feel that the HC Salisbury position cannot be recovered with certainty and that the 1966 position represents the best available evidence for the position of the corner. Further search of the area failed to yield any other evidence for a conflicting position for the corner. The Found 3/4" pinched Pipe is accepted as a careful and faithful perpetuation of the position of the original corner.

C. Description of monument for corner and accessories established to perpetuate locating the position of the corner.

Table with 4 columns: Monument Description, Location (T13N, R15W), and Distance. Includes entries for Harrison County Surveyor Monument, NW Face, SW Face, S Face, and NE Face.

Signed by J. Randolph Hepworth
Surveyor's Michigan License No. 26457

Date July 6, 1995

Oceana County Remonumentation Peer Group Reviewed and Approved by MICHIGAN STATE BOARD OF PROFESSIONAL SURVEYORS, JAN 23, 1971 REVISED MAY 31, 1978 REVISED JAN 1, 1988

Date: 5-25-95

J. Randolph Hepworth

