

**SURVEY & REMONUMENTATION**

FEB 02 1998

100791

**LAND CORNER RECORDATION CERTIFICATE**  
Filing Requirement of Act 74, Mich. P.A. 1970

SECTION

For corners in  
Oceana

(County)

Located In:

Corner Code #

1. Public Land Survey

T14N R16W

E-1 ✓

T15N R16W

E-13

T R

T R

2. Property Controlling in Section

S T R

S T R

3. Miscellaneous Property in Sec.

S T R

S T R

4. Lot No. \_\_\_\_\_, Recorded Plat \_\_\_\_\_

5. Private Claims \_\_\_\_\_

J. Randolph Hepworth

April 4 97

I, \_\_\_\_\_, in a field survey on \_\_\_\_\_, 19\_\_\_\_ do hereby state that under requirements of P.A. 74, Michigan P.A. of 1970, the corner points mentioned in lines 1 and 2 above were in conformance with regulations and rules therefore as required in the current manual of survey instructions of the United States Department of the Interior, Bureau of Land Management or by a decree of a Court of Law and /or that the corner points mentioned in lines 3, 4 and 5 above were in conformance with the rules of the Michigan Board of Land Surveyors or by a Decree of a Court of Law: established, re-established, monumented, recovered, found as expressed below:

NOTE: Not more than 2 corners, all in the same town and range, may be recorded on this certificate.

STATE OF MICHIGAN  
COUNTY OF OCEANA  
RECEIVED FOR RECORD

13 Jan 1998 4:52:21 PM

JOSEPH E. MERTEN  
REGISTER OF DEEDS

Register of Deeds Stamp & File Number

A	B	C	D	E	F	G	H	I	J	K	L	M
1												
2	6		5		4		3		2		1	
3												
4	7		8		9		10		11		12	
5												
6	18		17		16		15		14		13	
7												
8	19		20		21		22		23		24	
9												
10	30		29		28		27		26		25	
11												
12	31		32		33		34		35		36	
13												

Oceana County Remonumentation  
Peer Group Reviewed & Approved

Date: 9-18-97

A. Description of original monument and accessories and/or subsequent restoration:

E-1 CORNER COMMON TO SECTIONS 4 & 5 T14N, R16W FERRY TOWNSHIP  
E-13 CORNER COMMON TO SECTIONS 32 & 33 T15N, R16W ELBRIDGE TOWNSHIP

GLO Set Post E-1 20' Beech S20°E 47.5' 8" Beech S60°W 14.5'  
E-13 12" Beech N48°W 27.7' 8" Beech N30°E 9.2' GLO common corner  
Book A, Pg 102, S Edson, 1880; Corner not described or witnessed.  
Book A, Pg 304, H. Salisbury, 1892; "Iron rod 3/4" 18" long See Gov't Field Notes  
Book C, Pg 26, F. Wetmore, 1901; "Corner set by Grant in '92 destroyed by scraping hill. Set new Corner A gray flat stone Smooth face to West 3" x 12" x 26" with 4 Small stones"  
Book B, Pg 40, F. Wetmore, 1903; Same description as Book C, Pg 26.

Consumers Power Co. Salisbury & Sanders, 1967, Set 3/4" Pipe  
14" Tw. Maple S65°E 72.0' TPole S45°E 36.3' 22" Maple S15°E 41.3' 22" Maple S70°W 106.4'  
OCRC WITNESS BOOK 1967 Set 3/4" Pipe Con. P. W. Witnesses Same as Con P Co

Recorded Survey, Jkt # 350, JR Hepworth # 26457, 3-24-83 Fd 3/4" Pipe, Tree row to S C/L E-W Rd  
24" Maple ESE 71.65' TPole SE 36.55' 24" Maple S10°E 42.25' 24" Maple WSW 108.19'

B. Description of corner evidence found and/or method applied in restoring or reestablishing corner.

I found a 3/4" Pipe in center of E-W gravel, 8" below the surface, and on a tree line to the south. Upon excavation, the pipe was found to be 18" long. No other corner evidence was found. Corner falls in area of 6'-8" cut and it is unlikely that the Wetmore, 1901 corner is still in existence. Three C.P. Co. witnesses are standing and measure OK to this Pipe.

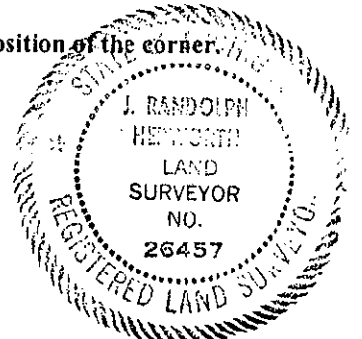
This Iron was accepted as being a careful and faithful perpetuation of the original corner. No evidence is known to me that would lead me to believe that the corner should be in another location.

I lowered the 3/4" Pipe and placed a 4"x20" Harrison Cast Iron Monument stamped "County Surveyor" and "26457" above it.

C. Description of monument for corner and accessories established to perpetuate locating the position of the corner.

E-1 CORNER COMMON TO SECTIONS 4 & 5 T14N, R16W FERRY TOWNSHIP  
E-13 CORNER COMMON TO SECTIONS 32 & 33 T15N, R16W ELBRIDGE TOWNSHIP

4"x20" Harrison Cast Iron Monument stamped "County Surveyor" and "26457"  
60d spk N Face 48" Maple 257°az 108.25 EDM  
60d spk E Face 30" Maple 207°az 62.55 EDM  
60d spk W Face 40" Maple 168°az 42.11 EDM  
60d spk SW Face 32" Maple 108°az 72.18 EDM  
60d spk W Face 6" Beech 31°az 35.84 EDM  
Found JRH 1/2" Iron North 32.92 EDM



Signed by J. Randolph Hepworth

Date November 29, 1997

Surveyor's Michigan License No. 26457