

**SURVEY & REMONUMENTATION**

FEB 02 1998

100795

**SECTION**

**LAND CORNER RECORDATION CERTIFICATE**  
Filing Requirement of Act 74, Mich. P.A. 1970

For corners in  
Oceana

(County)

Located In:

Corner Code #

- 1. Public Land Survey      T14N R16W      F-1  
   T      R      \_\_\_\_\_  
   T15N R16W      F-13 ✓  
   T      R      \_\_\_\_\_
- 2. Property Controlling      S      T      R      \_\_\_\_\_  
in Section                      S      T      R      \_\_\_\_\_
- 3. Miscellaneous            S      T      R      \_\_\_\_\_  
Property in Sec.               S      T      R      \_\_\_\_\_

STATE OF MICHIGAN  
COUNTY OF OCEANA  
RECEIVED FOR RECORD

13 Jan 1998 4:53:20 PM

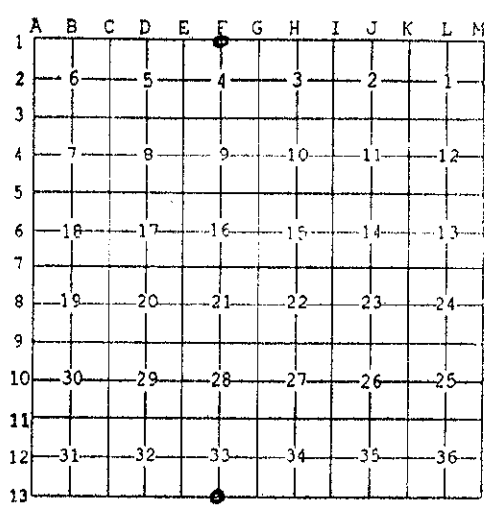
JOSEPH E. MERTEN  
REGISTER OF DEEDS

Register of Deeds Stamp & File Number

- 4. Lot No. \_\_\_\_\_, Recorded Plat \_\_\_\_\_
- 5. Private Claims \_\_\_\_\_

I, J. Randolph Hepworth, in a field survey on April 4 97, 19\_\_\_\_ do hereby state that under requirements of P.A. 74, Michigan P.A. of 1970, the corner points mentioned in lines 1 and 2 above were in conformance with regulations and rules therefore as required in the current manual of survey instructions of the United States Department of the Interior, Bureau of Land Management or by a decree of a Court of Law and /or that the corner points mentioned in lines 3, 4 and 5 above were in conformance with the rules of the Michigan Board of Land Surveyors or by a Decree of a Court of Law; established, re-established, monumented, recovered, found as expressed below:

NOTE: Not more than 2 corners, all in the same town and range, may be recorded on this certificate.



**A. Description of original monument and accessories and/or subsequent restoration:**

F-1 1/4 CORNER COMMON TO SECTIONS 4 T14N, R16W FERRY TOWNSHIP  
F-13 SECTION 33 T15N, R16W ELBRIDGE TOWNSHIP

GLO Set Post 14" Beech N48°W 13.9" 10" Beech N58°E 23.1'

Book A, Pg 304, H. Salisbury, 1892: "Stone previously set for qtr. post."  
Book C, Pg 26, F. Wetmore, 1901: "Old Corner long recognized."  
Book B, Pg 40, F. Wetmore, 1903: Same description as Book C, Pg 26.

Consumers Power Co. Salisbury & Sanders, 1966: Fd 1 1/4" Pipe Raised with 1/2" pipe  
25" Maple N60°E 56.4' 26" Maple N60°W 57.4' PPole S45°E 116.8'

OCRC WITNESS BOOK 1967 1 1/4 Pipe 1 1/2' below surface 1/2 Pipe on top  
Witnesses same as Consumers Power

Oceana County Remonumentation  
Peer Group Reviewed & Approved

Date: 9-18-97  
JRH

J. Randolph Hepworth  
Oceana County Surveyor

**B. Description of corner evidence found and/or method applied in restoring or reestablishing corner.**

I found a 5/8" Iron 10" below the surface at 6' west of centerline intersection of gravel roads E-W&S. Occupation line is vague to the north, but runs from this iron. Upon excavation, this Iron was found to be inside a 1 1/4" Pipe, projecting 6". Upon excavation to 24" deep, it was found to be beside a 4"x7"x18" shale or sandstone. All C.P. Co. witnesses are standing and measure OK to this Iron. This corner was used by Consumers Power Co. as common to T14N & T15N and is accepted by me as common to both townships by Common Report and former useage by others.

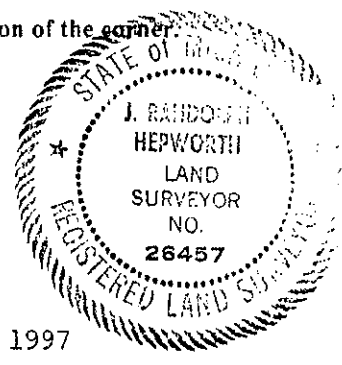
This Iron was accepted as being a careful and faithful perpetuation of the original corner. No evidence is known to me that would lead me to believe that the corner should be in another location.

I lowered the 5/8" Iron and stone and placed a 4"x20" Harrison Cast Iron Monument stamped "County Surveyor" and "26457" above it.

**C. Description of monument for corner and accessories established to perpetuate locating the position of the corner**

F-1 1/4 CORNER COMMON TO SECTION 4 T14N, R16W FERRY TOWNSHIP  
F-13 SECTION 33 T15N, R16W ELBRIDGE TOWNSHIP

4"x20" Harrison Cast Iron Monument stamped "County Surveyor" and "26457"				
60d spk NE Face	Power Pole	142°az	117.15	EDM
60d spk SE Face	36" Maple	62°az	56.94	EDM
60d spk NE Face	40" Maple	297°az	57.89	EDM
mag nail SE Face	4x4 Road Name SignPost	211°az	40.36	EDM
60d spk NW Face	Power Pole	246°az	249.91	EDM



Signed by J. Randolph Hepworth  
Surveyor's Michigan License No. 26457

Date November 29, 1997