

MICHIGAN  
DEPARTMENT OF CONSERVATION  
FORESTRY DIVISION

# LAND CORNER RECORD

T. 16 N.R. 15 W

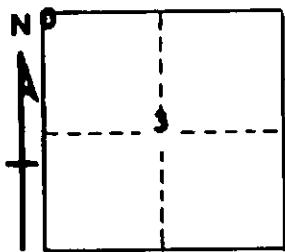
OCEANA COUNTY

DESCRIPTION OF CORNER Sec. corner common to sections 3 & 4

CORNER MONUMENT Fd. old 1/2" rod by large stone.

DATE MONUMENT PLACED AND WITNESSED April 1969

WITNESSES TO CORNER.....



CIRCLE CORNER REGISTERED

<u>10" Maple (triple)</u>	<u>N 20 E</u>	<u>81.3'</u>
<u>12" Oak</u>	<u>S 40 E</u>	<u>45.7'</u>
<u>1" pipe (looks new)</u>	<u>Due W</u>	<u>3.5'</u>
<u>AND Fd. Nail, S.Side P.POLE</u>	<u>N 76W</u>	<u>113.76'</u>

DESCRIPTION IN DETAIL AS TO HOW CORNER WAS LOCATED AND IDENTIFIED OR RESTORED.

This corner was recovered from data furnished by George Blass, R.L.S., Baldwin. The corner falls in the intersection of a T road (N-E-W). Salisbury survey notes call for an Ir. Rod. See Report of Survey & Plat of Survey, Sec. 3 T16N-R15W.

SURVEYOR'S SEAL

SIGNED

*Carl F. Roser*

REGISTERED LAND SURVEYOR #12028

DATE 5/27/69