

MICHIGAN
DEPARTMENT OF CONSERVATION
FORESTRY DIVISION

LAND CORNER RECORD

T. 16 N.R. 15 W

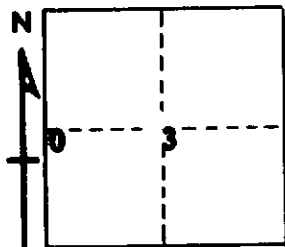
OCEANA COUNTY

DESCRIPTION OF CORNER 1/4 corner common to sections 3 & 4

CORNER MONUMENT Fd. old 1/2" x 44" Ir. Rod drove in remains of Cedar Post
(Salisbury corner). Added Std. Dept. Mon. & Ced. guard post.

DATE MONUMENT PLACED AND WITNESSED April 1969

WITNESSES TO CORNER..... 15" Oak N 12 W 42.8'



6" Maple S 12 E 10.7'

10" B. Cherry, triple N 55 E 34.3'

AND N-S Random Due E 12.8'

DESCRIPTION IN DETAIL AS TO HOW CORNER WAS LOCATED AND IDENTIFIED OR RESTORED.

This corner was recovered by retracing survey of Sec. 3 by H. C. Salisbury. See Report of Survey and Plat of Survey, Sec. 3, T16N-R15W.

SURVEYOR'S SEAL

SIGNED Carl F. Roer DATE 5/27/69
REGISTERED LAND SURVEYOR 12028