

MICHIGAN
DEPARTMENT OF CONSERVATION
FORESTRY DIVISION

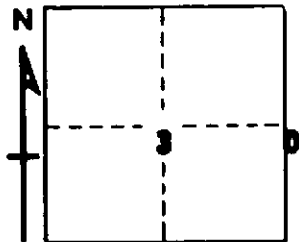
LAND CORNER RECORD

T. 16 N.R. 15 W

OCEANA COUNTY

DESCRIPTION OF CORNER 1/4 CORNER COMMON TO SECTIONS 2 & 3
CORNER MONUMENT SET STD. DEPT. MON. (buried) in line with Fence remains to N, and
in approx. center of E-W Trail Road.
DATE MONUMENT PLACED AND WITNESSED April 1969

WITNESSES TO CORNER..... 14" Maple S 25 E 78.3'



10" B. Cherry S 58 W 76.3'
Set. Cedar Post & Tag Due S 33.0'
Ctr. E-W Sand Tr. Rd. Due N 2.0'
AND Cor. Fn. Post (down) Due N 27.0'
E-W Fence Remains Due S 21.0'

DESCRIPTION IN DETAIL AS TO HOW CORNER WAS LOCATED AND IDENTIFIED OR RESTORED.

THIS CORNER WAS SET DURING RETRACEMENT AND BOUNDARY SURVEY IN THIS AREA. SEE
REPORT OF SURVEY AND PLAT OF SURVEY, SEC. 3, T16N-R15W.

SURVEYOR'S SEAL

SIGNED

Carl F. Roer

DATE

5/27/69

REGISTERED LAND SURVEYOR

#12028