

MICHIGAN
DEPARTMENT OF CONSERVATION
FORESTRY DIVISION

LAND CORNER RECORD

T. 16 N.R. 15 W

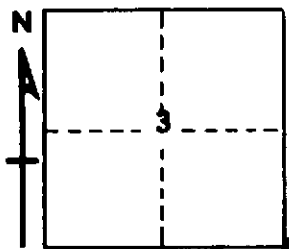
OCEANA COUNTY

DESCRIPTION OF CORNER SEC. CORNER COMMON TO SECTIONS 2-3-10-11

CORNER MONUMENT Fd. old 1/2" x 43" Iron rod. Added Std. Dept. Mon. & Ced. Guard Post

DATE MONUMENT PLACED AND WITNESSED April 1969

WITNESSES TO CORNER..... 9" Red Pine S 75 W 24.1'



7" Red Pine S 25 W 15.6'

Old E-W Fn. Remains Due N 15.0'

AND

DESCRIPTION IN DETAIL AS TO HOW CORNER WAS LOCATED AND IDENTIFIED OR RESTORED.

THIS CORNER WAS RECOVERED DURING RETRACEMENT AND BOUNDARY SURVEY IN THIS AREA.
THE CORNER WAS FOUND FROM WITNESS FURNISHED BY BOB GRIFFIN, RLS, FOREST SERVICE,
BALDWIN. THE CORNER IS BELIEVED TO BE A SALISBURY CORNER. SEE REPORT OF SURVEY
AND PLAT OF SURVEY, SEC. 3, T16N-R15W.

SURVEYOR'S SEAL

SIGNED Carl F. Rosen DATE 5/27/69
REGISTERED LAND SURVEYOR 12028