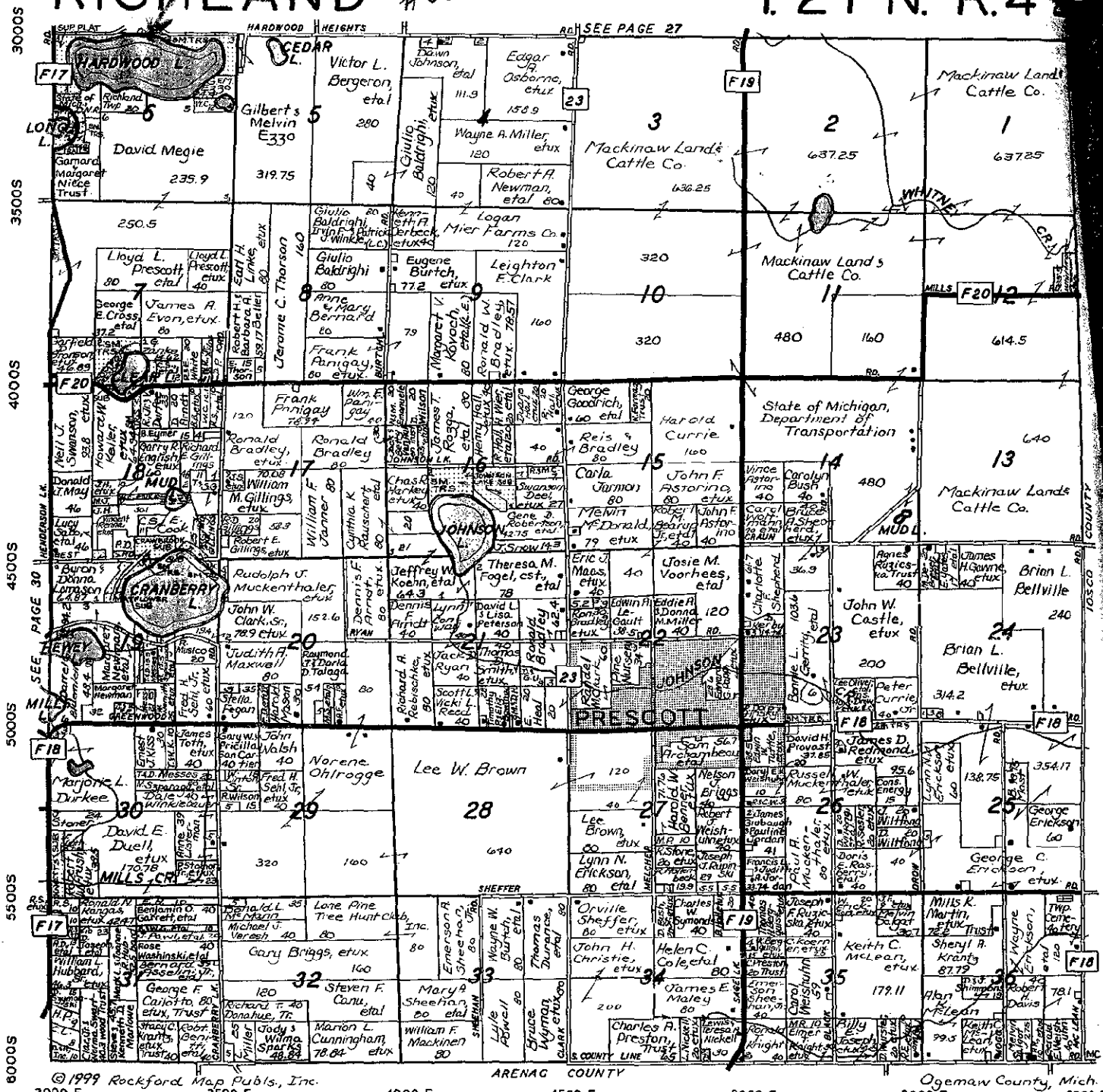


THIS MAP IS L 3 P 103

32

RICHLAND #001

T.21 N.-R.4



© 1999 Rockford Map Publs., Inc. 3000 E 3500 E 4000 E 4500 E 5000 E 5500 E 6000 E
 ARENAG COUNTY Ogemaw County, Mich.

SURVEY & REMONUMENTATION

AUG 30 1999 Courtesy of
Richland Township
 and
Village of Prescott

Citizens Bank
 Citizens Banking Corporation
 "A Part Of Your Life"

FDIC INSURED FULL SERVICE BANK

LINWOOD OFFICE: 697-4418
 STANDISH OFFICE: 846-4541
 TWINING OFFICE: 867-4256
 SKIDWAY LAKE OFFICE: 873-3296