

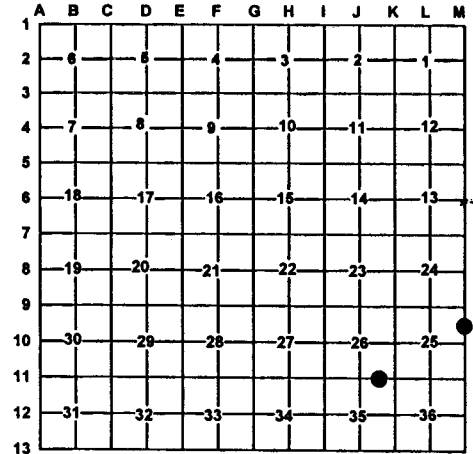
LAND CORNER RECORDATION CERTIFICATE
Filing Requirement of Act 74, Mich. PA 1970

For Corners In: Ogemaw (County)	Located In	Corner Code #
1. Public Land Survey	T _____ R _____	_____
	T _____ R _____	_____
2. Property Controlling in Section	S 25 T 23 N R 1 E	7
	S 35 T 23 N R 1 E	2
3. Miscellaneous Property in Section	S _____ T _____ R _____	_____
	S _____ T _____ R _____	_____
4. Lot No: _____	Recorded Plat: _____	
5. Private Claims: _____		

Register of Deeds Stamp & File Number

I, Carl T. Kiiskila, in a field survey on July 6, 2000 do hereby state that under requirements of PA 74, Michigan PA of 1970, the corner points mentioned in lines 1 and 2 above were in conformance with regulations and rules therefore as required in the current manual of survey instructions of the United States Department of the Interior, Bureau of Land Management or by a decree of a Court of Law and/or that the corner points mentioned in lines 3, 4 and 5 above were in conformance with the rules of the Michigan Board of Land Surveyors or by a Decree of a Court of Law; established, re-established, monumented, recovered, found as expressed below:

NOTE: Not more than 2 corners, all in the same town and range, may be recorded on this certificate.



A. Description of original monument and accessories and/or subsequent restoration:

7- This corner position was not established during the original government survey.

2- This corner position was not established during the original government survey.

B. Description of corner evidence found and/or method applies in restoring or re-establishing corner:

7 Established the North 1/16 corner on the East line of Section 25 per BLM instructions for the subdivision of a section

2 Established the Northwest corner of the Northeast quarter of the Northeast quarter of section 35 per BLM instructions for the subdivision of a section.

C. Description of monument for corner and accessories established to perpetuate locating the position of the corner:

7 Set 5/8" X 32" rerod with PS cap #33981
 Wit: 5" Maple S28°W 7.89'
 5" Maple N80°W 11.98'
 * 22" White Pine S87°E 26.18'
 5" Maple N40°E 40.54'
 N-S Fence West 3.5'
 1/2" capped iron West ±2.75'
 Carsonite post North 1'±
 * Old witness by others

2 Set 5/8" X 32" rerod with P.S. cap # 33981
 Wit: 12" & 14" Twin Oak S62°E 26.97'
 3" Ash S64°W 22.16'
 7" Maple N62°E 55.03'
 10" & 12" Twin Maple N14°E 10.26'
 Center line of unused trail rd. South 2'±
 Carsonite post North 1'±

Signed by: Carl T. Kiiskila
 Surveyor's Michigan License No.: 33981

Date: 12-4-00

