

LAND CORNER RECORDATION CERTIFICATE

Filing Requirement of Act 74, Mich. PA 1970

For Corners In: Ogemaw (County)	Located In	Corner Code #
1. Public Land Survey	T <u>23</u> R <u>1E</u>	J-11
	T _____ R _____	_____
2. Property Controlling in Section	S <u>35</u> T <u>23</u> R <u>1E</u>	7
	S _____ T _____ R _____	_____
3. Miscellaneous Property in Section	S _____ T _____ R _____	_____
	S _____ T _____ R _____	_____

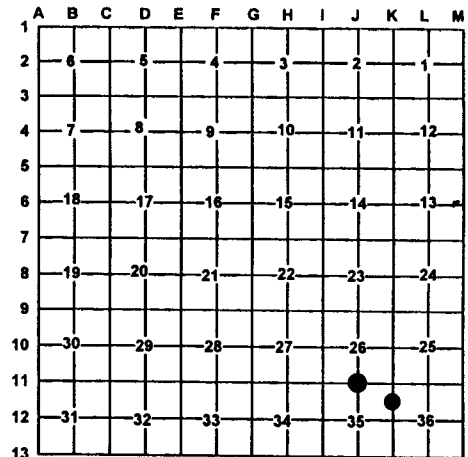
Register of Deeds Stamp & File Number

4. Lot No: _____ Recorded Plat: _____

5. Private Claims: _____

I, Carl T. Kiiskila, in a field survey on July 6, 2000 do hereby state that under requirements of PA 74, Michigan PA of 1970, the corner points mentioned in lines 1 and 2 above were in conformance with regulations and rules therefore as required in the current manual of survey instructions of the United States Department of the Interior, Bureau of Land Management or by a decree of a Court of Law and/or that the corner points mentioned in lines 3, 4 and 5 above were in conformance with the rules of the Michigan Board of Land Surveyors or by a Decree of a Court of Law; established, re-established, monumented, recovered, found as expressed below:

NOTE: Not more than 2 corners, all in the same town and range, may be recorded on this certificate.



A. Description of original monument and accessories and/or subsequent restoration:

J-11 GLO James H. Mullett D.S. 1846
Set quarter section post
Wit: Y. Pine 14" S15°W 83 Links
W. Pine 16" N05°W 20 Links
Marcus Schaaf RLS# 3104, set pipe in concrete for corner,
no witnesses or date given.

7 This corner position was not established during the original government survey.

James Richardson RLS #2527, found a 2" pipe for corner and used it for his plat of Hidden Hills.
Wit: S. Pine 5" S46°W 52.90'
W. Pine 6" S42°E 29.15'
W. Pine 36" N02°W 18.20'

Liber 1, Page 7 Larry Cavanagh RLS #17614 June 7, 1972.
Found bent 2" pipe for corner.
Wit: 5" S. Pine S46°W 52.9'
6" W. Pine S42°W 49.15'
36" W. Pine stump N02°W 18.2'

B. Description of corner evidence found and/or method applies in restoring or re-establishing corner:

J-11 Found a bent 1 1/2" pipe in concrete

7- Established the Southeast corner of the Northeast quarter of the Northeast quarter of section 35 per BLM instructions for the subdivision of a section.

C. Description of monument for corner and accessories established to perpetuate locating the position of the corner:

J-11 Replaced bent Schaaf monument with standard DNR monument.
Wit: *Power pole N78°E 6.10'
*Red Pine S35°W 65.87'
3" Oak N24°W 21.23'
16" Twin Cherry S22°E 89.88'
Center line of county rd. South 18'±

7- Set 5/8" X 32" reroed with P.S. cap #33981
Wit: 6" Oak S70°E 13.43'
3" White Pine S06°E 25.98'
16" Oak S60°W 50.02'
8" Oak S86°W 40.80'
Center line of N-S trail rd. West 4'±
Carsonite Post West 33'±

*Old Witnesses by others

Signed by: Carl T. Kiiskila
Surveyor's Michigan License No.: 33981

Date: 12-4-00

