

LAND CORNER RECORDATION CERTIFICATE

Filing Requirement of Act 74, Mich. PA 1970

For Corners In: Ogemaw (County)	Located In	Corner Code #
1. Public Land Survey	T <u>23N</u> R <u>2E</u>	<u>B-13</u>
	T <u>23N</u> R <u>2E</u>	<u>A-13</u>
2. Property Controlling in Section	S _____ T _____ R _____	_____
	S _____ T _____ R _____	_____
3. Miscellaneous Property in Section	S _____ T _____ R _____	_____
	S _____ T _____ R _____	_____

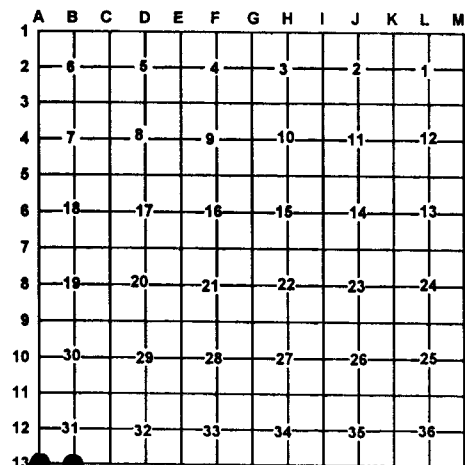
4. Lot No: _____ Recorded Plat: _____

5. Private Claims: _____

I, Carl T. Kiiskila, in a field survey on February 15, 2001 do hereby state that under requirements of PA 74, Michigan PA of 1970, the corner points mentioned in lines 1 and 2 above were in conformance with regulations and rules therefore as required in the current manual of survey instructions of the United States Department of the Interior, Bureau of Land Management or by a decree of a Court of Law and/or that the corner points mentioned in lines 3, 4 and 5 above were in conformance with the rules of the Michigan Board of Land Surveyors or by a Decree of a Court of Law; established, re-established, monumented, recovered, found as expressed below:

NOTE: Not more than 2 corners, all in the same town and range, may be recorded on this certificate.

Register of Deeds Stamp & File Number



A. Description of original monument and accessories and/or subsequent restoration:

B-13 GLO- Lewis Clawson D.S. 1838
Set quarter section post
Wit: No witness tree

Liber 3 Page 166 (John P. May L.S. #43061 April 24, 1998)
Found and accepted a 2" pipe
N81°E 9.70' 8" Maple
East 6.55' remon. Monument
S46°E 37.64' 6" Poplar
S15°W 28.60' 18" Oak
N13°W 9.29' 4" Maple

A-13 GLO- Lewis Clawson D.S. -1838
Township corner as previously established, set post
Wit: Spruce Pine 7 N27°W 48 links
Spruce Pine 7 S49°E 48 links

Survey, Richardson 8/74.
No corner material or witnesses given

Survey Cavanagh 6/79 (Rec. L3, P61)
No corner material or witnesses given

L.3 Page 68 (Timothy L. Lapham LS #27595 Dec. 27, 1996)
Found and accepted 2" iron pipe, set 5/8" X 36" rerod
with 2 1/4" alum. cap marked "1996 27595"
N47°E 29.61' 12" Oak
S85°E 15.08' 8" W. Oak
S45°W 28.09' 8" W. Oak
N22°W 17.21" 10" Twin W. Oak

B. Description of corner evidence found and/or method applies in restoring or re-establishing corner:

B-13 Found 2" Iron pipe

A-13 Found Ogemaw county monument

C. Description of monument for corner and accessories established to perpetuate locating the position of the corner:

B-13 Found 2" iron pipe
Wit: 3" White Birch S11°E 3.21'
7" Oak N86°E 8.69'
3" Oak N28°W 9.41'
* 3" Maple N06°W 18.72'
County Mon. East 6.49'
Carsonite Post North 1'±
* Old witnesses by others.

A-13 Found Ogemaw County Monument
Wit: *8" Oak N23°W 17.23'
*12" Oak N51°E 29.61'
*8" Oak S85°E 16.11'
*8" Oak S54°W 27.99'
Centerline of E-W road South 8'±
Carsonite Post North 1'±
* Old witnesses by others.

Signed by: Carl T. Kiiskila
Surveyor's Michigan License No.: 33981

Date: 8-30-01

