

LAND CORNER RECORDATION CERTIFICATE

Filing Requirement of Act 74, Mich. PA 1970

For Corners In: Ogemaw (County)	Located In	Corner Code #
1. Public Land Survey	T _____ R _____	_____
	T _____ R _____	_____
2. Property Controlling in Section	S 31 T 23N R 2E	1
	S 31 T 23N R 2E	4
3. Miscellaneous Property in Section	S _____ T _____ R _____	_____
	S _____ T _____ R _____	_____

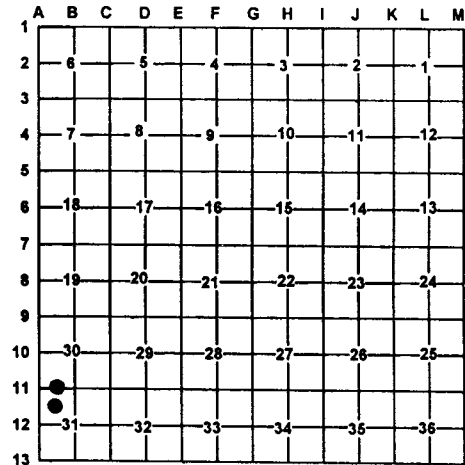
Register of Deeds Stamp & File Number

4. Lot No: _____ Recorded Plat: _____

5. Private Claims: _____

I, Carl T. Kiiskila, in a field survey on February 14, 2001 do hereby state that under requirements of PA 74, Michigan PA of 1970, the corner points mentioned in lines 1 and 2 above were in conformance with regulations and rules therefore as required in the current manual of survey instructions of the United States Department of the Interior, Bureau of Land Management or by a decree of a Court of Law and/or that the corner points mentioned in lines 3, 4 and 5 above were in conformance with the rules of the Michigan Board of Land Surveyors or by a Decree of a Court of Law; established, re-established, monumented, recovered, found as expressed below:

NOTE: Not more than 2 corners, all in the same town and range, may be recorded on this certificate.



A. Description of original monument and accessories and/or subsequent restoration:

- | | |
|---|---|
| 1-This corner position was not established during the original government survey. | 4-This corner position was not established during the original government survey. |
|---|---|

B. Description of corner evidence found and/or method applies in restoring or re-establishing corner:

- | | |
|---|---|
| 1- Established the Northwest corner of the Northeast quarter of the Northwest quarter of section 31 per B.L.M. instructions for the subdivision of a section. | 4- Established the Southwest corner of the Northeast quarter of the Northwest quarter of section 31 per B.L.M. instructions for the subdivision of a section. |
|---|---|

C. Description of monument for corner and accessories established to perpetuate locating the position of the corner:

- | | |
|---|---|
| 1- Set 5/8" X 32" rered with P.S. cap #33981 in monument box
Wit: 16" Oak N17°W 60.26'
5" Cherry N33°E 32.88'
4" Oak S30°E 47.77'
12" Oak S15°W 38.07' | 4- Set 5/8" X 32" rered with P.S. cap # 33981
Wit: 5" Oak N64°E 26.88'
4" Maple N33°W 12.55'
4" Cherry S42°W 22.50'
7" Oak S23°E 20.10'
Carsonite post North 1± |
|---|---|

Signed by: Carl T. Kiiskila
 Surveyor's Michigan License No.: 33981

Date: 8-30-01

