

LAND CORNER RECORDATION CERTIFICATE
Filing Requirement of Act 74, Mich. P.A. 1970

For corners in
OGEMAW
(County)

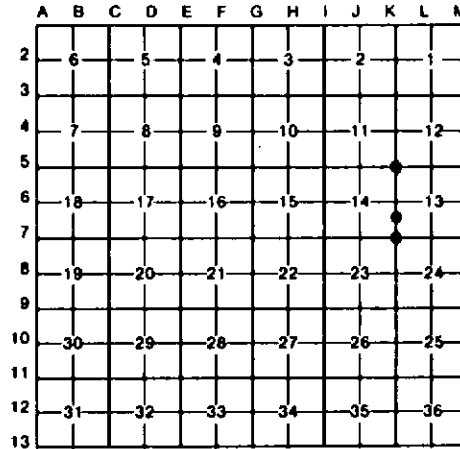
Located In: _____ Corner Code ~~##~~

- | | | | | |
|---------------------------------------|---|-------------|-----------|------------|
| 1. Public Land Survey | T | <u>23NR</u> | <u>3E</u> | <u>K-7</u> |
| | T | _____ | R | <u>K-5</u> |
| | T | _____ | R | _____ |
| | T | _____ | R | _____ |
| 2. Property Controlling
in Section | S | <u>13</u> | T | <u>R</u> |
| | S | _____ | T | R |
| 3. Miscellaneous
Property in Sec. | S | _____ | T | R |
| | S | _____ | T | R |

Register of Deeds Stamp & File Number

4. Lot No. _____, Recorded Plat _____
 5. Private Claims _____

I, CARL R. JOHNSON, in a field survey on MAY 29, 19 91, do hereby certify that under requirements of P.A. 74, Michigan P.A. of 1970, the corner points mentioned in lines 1 and 2 above were in conformance with regulations and rules therefore as required in the current manual of survey instructions of the United States Department of the Interior, Bureau of Land Management or by a decree of a Court of Law and/or that the corner points mentioned in lines 3, 4 and 5 above were in conformance with the rules of the Michigan Board of Land Surveyors or by a Decree of a Court of Law; established, re-established, monumented, re-monumented, recovered, found as expressed below:



NOTE: Not more than 4 corners, all in the same town and range, may be recorded on this certificate.

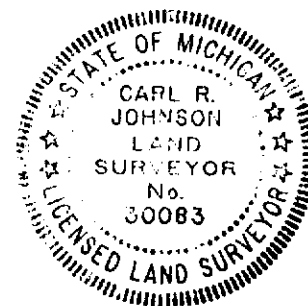
A. Description of original monument and accessories and/or subsequent restoration:
 K-7 K-5 10

B. Description of corner evidence found and/or method applied in restoring or reestablishing corner:

K-7	K-5	10
SET BY DOUBLE PROPORTIONATE MEASUREMENT 1 MILE EAST AND WEST; 1 MILE SOUTH AND 3 MILES NORTH.	SET BY DOUBLE PROPORTIONATE MEASUREMENT 1 MILE EAST AND WEST; 2 MILES SOUTH AND 2 MILES NORTH.	SET BY STANDARD SURVEY PROCEDURE FOR SUBDIVISION OF A SECTION.

C. Description of monument for corner and accessories established to perpetuate locating the position of the corner:

K-7	K-5	10
SW COR SEC. 13 3/4" IRON PIPE W/CAP	NW COR. SEC. 13 DNR MON.	S1/8 COR. ON W.LINE SEC. 13 5/8" BAR W/CAP
W.PINE 20" N70E 8.7 FT.	ASH 4" S55E 21.9 FT.	OAK 6" S72W 14.3 FT.
CEDAR 8" S49E 17.4 FT.	MAPLE 7" S20W 42.9 FT.	MAPLE 6" N66W 14.2 FT.
CEDAR 5" S49W 7.6 FT.	W.PINE 6" S42W 47.6 FT.	SPRUCE 6" N42E 20.8 FT.
CEDAR 8" N58W 6.8 FT.	ASH 6" N43W 24.8 FT.	FENCE COR. EAST 70.5 FT.
	CENTERLINE OLD GRADE 29 FT. NORTH.	



Signed by Carl R. Johnson Date 3/17/92
 Surveyor's Michigan License No. 30083