

LAND CORNER RECORDATION CERTIFICATE
Filing Requirement of Act 74, Mich. P.A. 1970

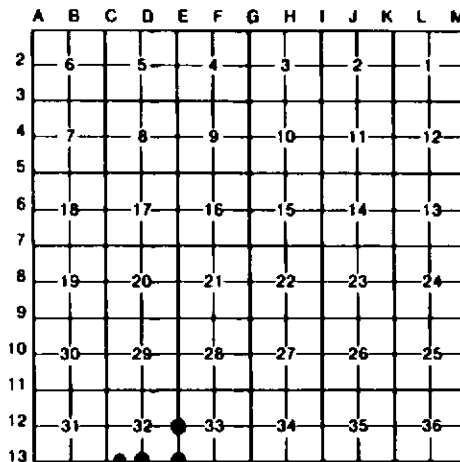
For corners in
OSHEMA

	(County)	Located In:	Corner Code #
1. Public Land Survey		T <u>21N</u> R <u>2E</u>	<u>D-13, E-12,</u> <u>E-13</u>
		T _____ R _____	_____
		T _____ R _____	_____
		T _____ R _____	_____
2. Property Controlling in Section	S <u>32</u>	T _____ R _____	<u>15</u>
	S _____	T _____ R _____	_____
3. Miscellaneous Property in Sec.	S _____	T _____ R _____	_____
	S _____	T _____ R _____	_____

Register of Deeds Stamp & File Number

4. Lot No. _____, Recorded Plat _____
 5. Private Claims _____

I, CARL F. ROSER, in a field survey on AUGUST 25, 19 93, do hereby certify that under requirements of P.A. 74, Michigan P.A. of 1970, the corner points mentioned in lines 1 and 2 above were in conformance with regulations and rules therefore as required in the current manual of survey instructions of the United States Department of the Interior, Bureau of Land Management or by a decree of a Court of Law and/or that the corner points mentioned in lines 3, 4 and 5 above were in conformance with the rules of the Michigan Board of Land Surveyors or by a Decree of a Court of Law; established, re-established, monumented, re-monumented, recovered, found as expressed below:



NOTE: Not more than 4 corners, all in the same town and range, may be recorded on this certificate.

A. Description of original monument and accessories and/or subsequent restoration:
 D-13 E-12 E-13

(NO EVIDENCE OF G.L.O. CORNER, B.T'S, LINE TREES & TOPOGRAPHY, AS CALLED OUT IN THE G.L.O. LINE NOTES; UNLESS NOTED IN ITEM "B" BELOW.)

(D-13 CONTINUED): ALSO FD REMAINS OF 2" X 3" X 7" PINE STK POINT ON W SIDE OF LIGHT COLORED SHADOW.

B. Description of corner evidence found and/or method applied in restoring or reestablishing corner:

D-13	E-12	E-13	15
REMONUMENTED S 1/4 COR S-32 IN FD LIGHT COLORED SHADOW OF SOFT SOIL WHERE OLD PIPE, AS FD BY G.D.HENNING & B.OSTLING IN 1950, WAS MOST LIKELY AT. THIS FITS TWO G.H. 1950 WITS AND REMAINS OF ONE USBT STP (US = PINE 30", N30°W, 82 LKS, 54.1'; NE MEAS N30°W, 54.5'± TO LARGE W.PINE STP REMAINS).	FOUND REROD AS SET BY P.S. L.CAVANAGH AT FD WOOD STAKE FOR W1/4 COR. OF S-33 IN 1972 SURVEY IN S-33. COR FITS US SWP TIE TO NORTH EXACT, AND STREAM TIE AND SWP EDGE SOUTH REASONABLE. WEST EDGE OF SPRING CREEK IS 220'± EAST AND 110'± SOUTH.	FD REROD WITH R. HIGGINS RLS CAP FOR SEC CORNER COMMON TO SEC'S 32 & 33. SMOOTH WIRE IN TREES RUNS EAST, A SECOND E-W SMOOTH WIRE IS 213'± SOUTH. FITS RECORD G.L.O. DISTANCE WEST TO FOUND PIPE FOR NW COR S-2(T20N-R02E).	ESTABLISHED SW CORNER OF SE 1/4 OF SW 1/4 SEC 32 PER STANDARD BLM INSTRUCTIONS.



(CONTINUED IN "A" ABOVE)

C. Description of monument for corner and accessories established to perpetuate locating the position of the corner:

D-13	E-12	E-13	15
SET DNR MON & CED POST. 4" R PINE N05°E 42.7' #25" R PINE S60°E 43.6' 7" MAPL(CLP 4) SOUTH 29.3' #24" R PINE S50°W 28.6' DNR MON N1/4 S-3 T20N R2E S88°25'W 3.47'	FD 1/2" REROD; ADDED DNR MON. SET CED POST. 3" W PINE N15°W 7.9' 11" MAPLE N20°E 29.6' 6" TW SUG MAPL S50°W 17.1' 6" TW SUG MAPL N85°W 14.6'	FD 1/2" REROD W/RLS CAP. REPLACED W/DNR MON;SET CED POST. 3" W PINE N35°W 38.36' 8" W PINE N15°W 41.33' 4" W PINE N50°E 38.04' NW S-2, 1 1/2" PIPE T20N R2E S88°31'W 141.20'	DROVE 5/8" X 3/4" REROD W/RLS CAP. SET CED POST W/LOC TAG. 14" ELM N25°W 21.0' 5" TW ASH N20°E 42.4' 16" OAK N83°E 32.0' NE COR FRL W 1/2 FRL W1/2 FRL SEC 3 N88°25'E 69.87'

#RLS D.HENNING WIT.

Signed by Carl F. Roser Date 9-27-95

Surveyor's Michigan License No. 12028