

LAND CORNER RECORDATION CERTIFICATE
Filing Requirement of Act 74, Mich. P.A. 1970

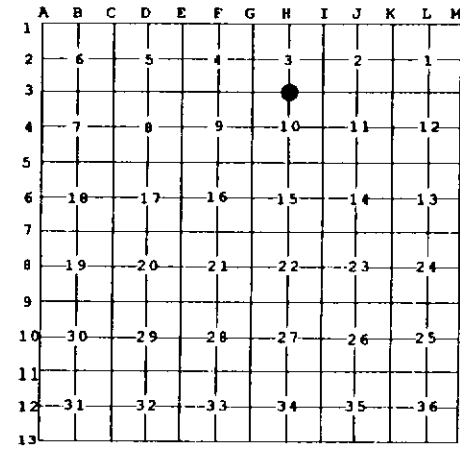
For corners in

<u>Osceola</u> <small>(County)</small>	Located In:	Corner Code #
1. Public Land Survey	T 18N R 9W	H-3
2. Property Controlling in Section	S T R	
3. Miscellaneous Property in Sec.	S T R	

Register of Deeds Stamp & File Num.

4. Lot No. _____, Recorded Plat _____

5. Private Claims _____



I, Craig W. McVean, in a field survey on June 10 19 97 do hereby state that under requirements of P.A. 74, Michigan P.A. of 1970, the corner points mentioned in lines 1 and 2 above were in conformance with regulations and rules therefore as required in the current manual of survey instructions of the United States Department of the Interior, Bureau of Land Management or by a decree of a Court of Law and /or that the corner points mentioned in lines 3, 4 and 5 above were in conformance with the rules of the Michigan Board of Land Surveyors or by a Decree of a Court of Law; established, re-established, monumented, recovered, found as expressed below:

NOTE: Not more than 2 corners, all in the same town and range, may be recorded on this certificate.

A. Description of original monument and accessories and/or subsequent restoration:

H-3 - GLO - Set 1/4 Post - J. Hodgson - 1838
 Beech 7" N80°E 15L., Beech 7" S37°W 30L.
 - Plat of 'Swiss Alpine No. 2' - L.4 of Plats, P.79,80 -
 M. McClung - 1972 - Plat Shows N-S 1/4 line but not H-3.
 - Plat of 'Swiss Alpine No. 3' - L.X of Plats, P. 285-291 - F.J. Berning - 1974
 H3 at NE. Corner of Sub. - Conc. Mon. shown

B. Description of corner evidence found and/or method applied in restoring or reestablishing corner:

H-3 - 1/4 Corner Common to Sec.3 & 10 - FND. Spike Nail on N. edge of 1" hole in sand. A bent Well Pt. was found lying nearby. No Conc. Mon. was found. Reset Plat 1/4 corner position by extending N. Line of 'Swiss Alpine No. 3' Plat E'ly 191.78' (P&M) from a found 1/2" Rebar (Conc. Mon. - Plat) at the NE Corner of Lot 382. Position fell in old hole and 0.26' S. of found nail. This position is basically on line between record Co. Surveyor corners at F3 & I3 and 1/3 the overall distance West of I-3. Set 4" DNR A.C. on 1" x 3' Long Iron Pipe at this position. Monument accepted as the best available evidence of the position of the original corner.

C. Description of monument for corner and accessories established to perpetuate locating the position of the corner:

H-3 - 4" DNR A.C. on 1" x 3' Iron Pipe. Built Ring of Stone.
 Blue Carsonite Post Set 1' ± NE
 N72°W 38.59' to Set N&T in NE Side 23" Tw. R. Oak (*)
 S16°W 60.08' to Set N&T in E. Side 18" Tw. R. Oak (*)
 N21°E 34.55' to Set N&T in E. Side 8" Tw. R. Maple scribed 'XBT'
 S62°E 19.30' to Set N&T in N. Side 3" R. Oak
 West 191.78' to 1/2" Rebar

* - BT's with healed blaze by others.



Signed by Craig W. McVean
 Surveyor's Michigan License No. 39088

Date 10/21/1998