

FEB 13 1998

LAND CORNER RECORDATION CERTIFICATE
Filing Requirement of Act 74, Mich. P.A. 1970

SECTION

For corners in

<u>Osceola</u> (County)	Located in:	Corner Code #
1. Public Land Survey	T 18N R 9W	G-3
	T R	
2. Property Controlling in Section	S T R	
	S T R	
3. Miscellaneous Property in Sec.	S T R	
	S T R	

APPROVED LAND CORNER
P.A. 345 OF 1990
Osceola County

Matthew M. Clev
6 Aug 1997

Register of Deeds Stamp & File Num

4. Lot No. _____, Recorded Plat _____

5. Private Claims _____

I, Craig W. McVean, in a field survey on April 8, 19 98 do hereby state that under requirements of P.A. 74, Michigan P.A. of 1970, the corner points mentioned in lines 1 and 2 above were in conformance with regulations and rules therefore as required in the current manual of survey instructions of the United States Department of the Interior, Bureau of Land Management or by a decree of a Court of Law and /or that the corner points mentioned in lines 3, 4 and 5 above were in conformance with the rules of the Michigan Board of Land Surveyors or by a Decree of a Court of Law; established, re-established, monumented, recovered, found as expressed below:

NOTE: Not more than 2 corners, all in the same town and range, may be recorded on this certificate.

A. Description of original monument and accessories and/or subsequent restoration:

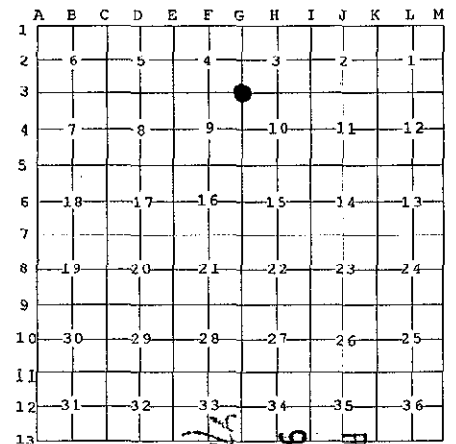
G-3 - GLO - Set Post - J. Hodgson - 1838
Beech 11" S44°E 23L
Beech 7" N27°E 19L
- Plat of Swiss Alpine No. 3 - F.J. Berning - 1974
Concrete Mon.

B. Description of corner evidence found and/or method applied in restoring or reestablishing corner:

G-3 - Section Corner common to Sec's 3,4,9&10. FND. 5/8"x18" Rebar per plat monumentation. No concrete monument was found. It is apparent per the plat and our retracement in this area that this monument was established on a line and 1/3 the distance between F-3 & I-3. This creates a latitudinal difference in GLO to G-1 of 42'± over-run and to G-5 a shortage of 80'± to GLO. The GLO Topo. Call S. to the N. shore position of Round Lake is also quite short. It is apparent that a double proportional position for G-3 would more closely conform to GLO. A search in this double proportional position yielded no evidence of an existing monument. Due to the platting and monumentation of the Swiss Alpine Subdivisions in Sec.'s 9 & 10, it is in the public's best interest to accept the existing 5/8" Rebar as the best available evidence of the position of the accepted corner.

C. Description of monument for corner and accessories established to perpetuate locating the position of the corner:

G-3 - Replaced 5/8"x18" Rebar with 4" DNR Alum. Cap on 1"x36" long Galv. Iron Pipe w/ Ring of Stone.
Set blue Carsonite Post 1' N.
West 27.48' (27.49'P) to 5/8" Rebar - NW. Cor. Lot 463
East 72.51' (P&M) to 5/8" Rebar - NE. Cor. Lot 463
North 6.13' to N&T in E. Side 2" R. Oak
N80°E 10.78' to N&T in S. Side 12" Tri-R. Maple - scribed 'XBT'
N56°W 59.07' to N&T in NE. Side 16" R. Maple - scribed 'XBT'



Stacey Campbell
98 DEC 17 PH 2:01
OSCEOLA COUNTY
REGISTER OF DEEDS



Signed by *Craig W. McVean*
Surveyor's Michigan License No. 39088

Date 10/14/1998