

SUBJECT TO
RECORDATION

FEB 19 1998

SECTION

LAND CORNER RECORDATION CERTIFICATE
Filing Requirement of Act 74, Mich. P.A. 1970

For corners in

<u>Osceola</u> <small>(County)</small>	Located in:	Corner Code #
1. Public Land Survey	T 18N R 9W	G-5
	T R	
2. Property Controlling in Section	S T R	
	S T R	
3. Miscellaneous Property in Sec.	S T R	
	S T R	

APPROVED LAND CORNER
P.A. 345 OF 1990
Osceola County

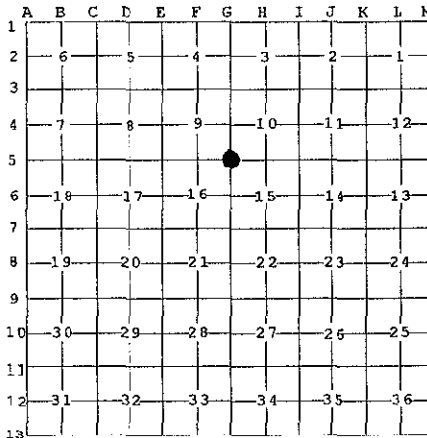
Matthew M. Clung
6 Aug 1998

Register of Deeds Stamp & File Number

4. Lot No. _____, Recorded Plat _____

5. Private Claims _____

I, Craig W. McVean, in a field survey on April 14, 19 98 do hereby state that under requirements of P.A. 74, Michigan P.A. of 1970, the corner points mentioned in lines 1 and 2 above were in conformance with regulations and rules therefore as required in the current manual of survey instructions of the United States Department of the Interior, Bureau of Land Management or by a decree of a Court of Law and /or that the corner points mentioned in lines 3, 4 and 5 above were in conformance with the rules of the Michigan Board of Land Surveyors or by a Decree of a Court of Law; established, re-established, monumented, recovered, found as expressed below:



NOTE: Not more than 2 corners, all in the same town and range, may be recorded on this certificate.

A. Description of original monument and accessories and/or subsequent restoration:

- G-5 - GLO - Set Post - J. Hodgson - 1838
Maple 16" N55°E 9L.
Hemlock 18" S28°W 47L.
- Large Co. Surveyor Bk. 2, P. 24 - F. McClung - 1914
Set Pine Stake from Hemlock 18" S28°W 47L.
Survey Sec. 16.
- Osceola Co. Cedar F. Bk. - Front Page - stake, Pine N61°W 52'
Post N1°E 31' - No Date
- Osceola Co. Cedar F.B. Pg. 50 - 1917 + - Iron & Stone
P.O. NW 72', SW 57.2'
- Osceola Co. FB. Pg. 60 - Dist. to H5 -2640'
- Swiss Alpine Sub. - M. McClung - L. 4, P. 68-72, 1971
Shows Corner & Conc. Mon. 33' E.
- Rec. Survey - L. 470, P. 758 - M. McClung - 1987
FND. Osceola Co. Brass Cap in 'T' Rd.
PP S60°E 57.15'
24" R. Oak N30°W 84.65'

B. Description of corner evidence found and/or method applied in restoring or reestablishing corner:

- G-5 - Sec. Corner Common to Sec. 9, 19, 15 & 16 - FND. 0.14' x 0.05' x 1.7' long strap iron in Ring of Stone in 'T' Road. Fits conc. plat Mon. to East and one M. McClung BT. Brass Cap not FND. Monument accepted as the best available evidence of the position of the original corner.

C. Description of monument for corner and accessories established to perpetuate locating the position of the corner:

- G-5 - Replace Strap Iron with 4" DNR Alum. Cap in 4" X 1' of PVC with conc. on 1" x 36" long Galv. Iron Pipe with Ring of Stone - Down 0.45'
N27°W 84.46' to Set N&T in W. Side 24" R. Oak (MM)
East 33.06' to Conc. Plat Mon. - (MM)
N27°E 87.56' to N&T in E. Side 7" R. Oak
S81°E 68.43' to N&T in S. Side 9" Spruce
S39°E 97.97' to N&T in SW Side 10" Tw. R. Oak

OSCEOLA COUNTY
REGISTER OF DEEDS

98 DEC 17 PM 2:01

Honey Crawford

Signed by Craig W. McVean
Surveyor's Michigan License No. 39088



Date 10/14/1998