

SURVEY & REMONUMENTATION

SEP 29 1994

COMMISSION

LAND CORNER RECORDATION CERTIFICATE Filing Requirement of Act 74, Mich. P.A. 1970

For corners in

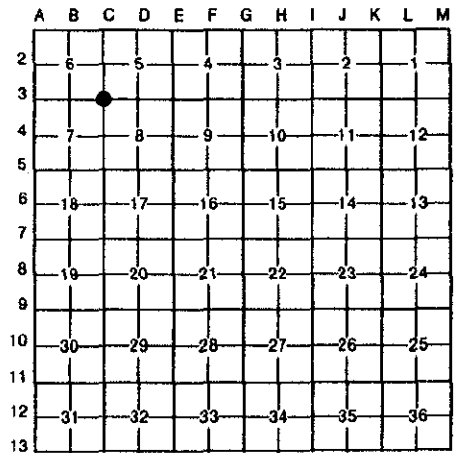
| Oscoda (County) | Located In: | Corner Code # |
|---------------------------------------|--------------------------|---------------|
| 1. Public Land Survey | T <u>26N</u> R <u>2E</u> | <u>C - 3</u> |
| | T _____ R _____ | _____ |
| | T _____ R _____ | _____ |
| | T _____ R _____ | _____ |
| 2. Property Controlling in Section | S _____ T _____ R _____ | _____ |
| | S _____ T _____ R _____ | _____ |
| 3. Miscellaneous Property in Sec. | S _____ T _____ R _____ | _____ |
| | S _____ T _____ R _____ | _____ |
| 4. Lot No. _____, Recorded Plat _____ | | |
| 5. Private Claims _____ | | |

L. 3 Pg 268

STATE OF MICHIGAN
OSCODA COUNTY
FILED

14 SEP 94 11:05 A.M.

PATSY J. PETERS
REGISTER OF DEEDS
Register of Deeds Stamp & File Number



I, Marvin E. Myers, in a field survey on July 7, 19 94, do hereby certify that under requirements of P.A. 74, Michigan P.A. of 1970, the corner points mentioned in lines 1 and 2 above were in conformance with regulations and rules therefore as required in the current manual of survey instructions of the United States Department of the Interior, Bureau of Land Management or by a decree of a Court of Law and/or that the corner points mentioned in lines 3, 4 and 5 above were in conformance with the rules of the Michigan Board of Land Surveyors or by a Decree of a Court of Law; established, re-established, monumented, re-monumented, recovered, found as expressed below:

NOTE: Not more than 4 corners, all in the same town and range, may be recorded on this certificate.

A. Description of original monument and accessories and/or subsequent restoration:

- GLO-July 1839 Coon
Mon-Post
WIT: 10" Spruce Pine S89½°W 12 lks.
8" Spruce Pine N42°E 20 lks.
- Sept. 1885 J.Randall
Mon-Set Post
WIT: 2" Soft Maple N72°E 54 3/4 lks.
Being a shade tree in corner of fence
- 1908-1909 Fargo Eng.
Mon-Unknown
WIT: 5" S. Maple N72°E 54 3/4 lks.
4" S. Pine N53°W 62 lks.
- May 1914 C.D.Seeley
Mon-Post by Randall
WIT: 6" Soft Maple N72°E 54 3/4 lks.
- Feb. 1924 G.F.Delamater
GLO-1935 Guy Veal
Mon-3½" Brass Tablet in 6" Conc. Mon.
WIT: 12" Maple N73°E 55 lks.
10" J.Pine N82 3/4°W 60½ lks.
8" J.Pine S61 3/4°W 37 lks.
- LCRC L.1, pg.79 April 1964 Griffin
Mon-Set 6" Conc. Mon. with 3" Brass Tablet
WIT: 10" Dock Spike in S. side of 19" Maple N73°E 36.84'
(This is a 1935 Bearing Tree)
Center of 3/4"x30" Iron Pipe on W. side of 2.3' by 1.8' by 1.5' stone S56°E 88.50'
10" Dock Spike in SE side 11" Red Pine (scribed B.T.) S32°W 83.50'
10" Dock Spike in S. side 21" Red Pine (not scribed) S87°W 88.55'
6"x7' Cedar Post West 33.00'
- May 1940 G.Henning
Mon-US GLO Mon.
- 1979 Consumer Power Co.
Mon-Fd. GLO 30" Below Surface Set ½" Bar to Surface
WIT: 14" Maple East 51.61'
Power Pole SSW 48.22'
Road Sign SE 62.60'
Cedar Post West 33.00'
- LCRC L.1, pg.221 April 1979 L.Beauregard
Mon-½" Bar
WIT: PK Nail in DNR Post West 33.00'
PK Nail in Power Pole S30°W 48.20'
#8 Nail in South face of 24" Maple N75°E 36.93'

B. Description of corner evidence found and/or method applied in restoring or reestablishing corner.

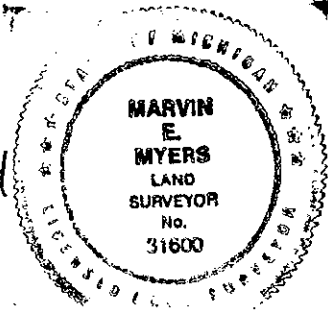
Found ½" Bar verified position by measurement to accessories of record and is accepted as a careful and faithful perpetuation of the position of the original corner. Found U.S. Blo Mon directly below ½"x24" bar.

C. Description of monument for corner and accessories established to perpetuate locating the position of the corner:

- Mon- Set std. Oscoda County Monument in Mon. box.
- WIT: North edge Stop Sign Post East 45.31'
C. N-S Road 10'± East
Fd. PK Nail in E. side Power Pole S30°W 48.22'
Fd. Dock Spike South side 19" Maple (stump) N73°E 36.84'
Fd. Nichols Road Sign Post S45°E 62.60'
Fd. 10" Dock Spike in S. side of 21" (now 44") R.Pine S87°W 88.55'
Fd. 14" Maple N70°E 51.61'

APPROVED
County Remonumentation
Peer Review Group

27 AUG 94



Signed by Marvin E. Myers

Date Aug 23, 1994

Surveyor's Michigan License No. 31600