

MICHIGAN
DEPARTMENT OF CONSERVATION
FORESTRY DIVISION

LAND CORNER RECORD

T. 27 N.R. 1 E.

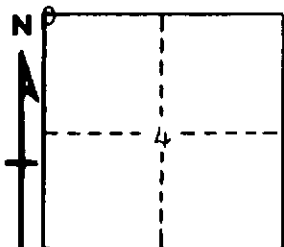
Oscoda COUNTY

DESCRIPTION OF CORNER Closing corner common to Sections 4 - 5 on north boundary of township

CORNER MONUMENT Left 1 1/2" pipe in place

DATE MONUMENT PLACED AND WITNESSED August 24, 1962

WITNESSES TO CORNER.....



CIRCLE CORNER REGISTERED

7" B. Oak S 36 W 61.3'

AND

DESCRIPTION IN DETAIL AS TO HOW CORNER WAS LOCATED AND IDENTIFIED OR RESTORED.

This corner was found while making a survey in Section 32. Found 1 1/2" pipe at corner, probably as restored by Marcus Schaaf in 1938. Set in accordance with standard corner to Sections 32 - 33, T28NR1E, which is 78 links east.

SURVEYOR'S SEAL

SIGNED *Kenneth J. Ostling* DATE September 5, 1962
REGISTERED LAND SURVEYOR