

MICHIGAN  
DEPARTMENT OF CONSERVATION  
FORESTRY DIVISION

# LAND CORNER RECORD

T. 27 N. R. 1 E.

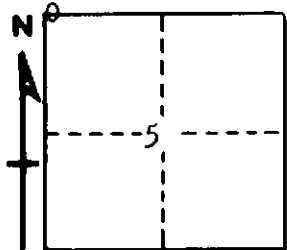
Oscoda COUNTY

DESCRIPTION OF CORNER Section corner common to Section 5 - 6 on north boundary of township

CORNER MONUMENT Corner Monument; Drove 1" x 24" pipe

DATE MONUMENT PLACED AND WITNESSED August 24, 1962

WITNESSES TO CORNER.....



CIRCLE CORNER REGISTERED

7" J. Pine S 60 W 31.8'

7" J. Pine S 64½ E 30.7'

AND

**DESCRIPTION IN DETAIL AS TO HOW CORNER WAS LOCATED AND IDENTIFIED OR RESTORED.**

This corner was found while making a survey of Section 32. Found old stake bottom in center of roads N-S-EW, as noted by Seeley in 1915.

Corner to Sections 31-32 T28NR1E is 39 links west.

SURVEYOR'S SEAL

SIGNED *Harold J. Ostling* DATE September 4, 1962  
REGISTERED LAND SURVEYOR