

MICHIGAN
DEPARTMENT OF CONSERVATION
FORESTRY DIVISION

LAND CORNER RECORD

T. 27 N.R. 2 E

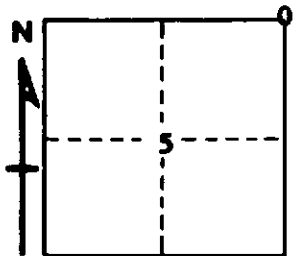
OSCODA COUNTY

DESCRIPTION OF CORNER Sec. corner common to sections 4-5 on North Boundary

CORNER MONUMENT Set DNR Mon.

DATE MONUMENT PLACED AND WITNESSED 5-13-69

WITNESSES TO CORNER.....



12" B. Oak S 32 W 32.6'

12" R. Pine S 68 E 105.9'

AND

CIRCLE CORNER REGISTERED USBT 14" Y. Pine Stp S 58 W 34.3'

DESCRIPTION IN DETAIL AS TO HOW CORNER WAS LOCATED AND IDENTIFIED OR RESTORED.

This corner was found during a retracement in this area. Found 1½" pipe in place, previously established by Marcus Schaaf. Both closing corner U.S.B.T. stumps in place, the SW with good face.

SURVEYOR'S SEAL

SIGNED

Conrad H. Dilling
REGISTERED LAND SURVEYOR 10068

DATE

6/9/69