

MICHIGAN  
DEPARTMENT OF CONSERVATION  
FORESTRY DIVISION

# LAND CORNER RECORD

T. 27 N.R. 2 E

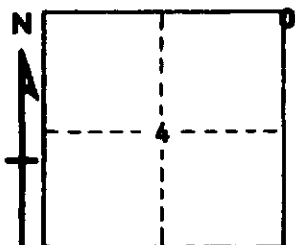
OSCODA COUNTY

DESCRIPTION OF CORNER Section corner common to Sections 3-4 on North Boundary of T27N-R2E

CORNER MONUMENT Set DNR Mon below surface

DATE MONUMENT PLACED AND WITNESSED 5-13-69

WITNESSES TO CORNER.....



6" S. Maple S 15 E 69.8'

16" B. Oak S 75 W 8.9'

AND

CIRCLE CORNER REGISTERED

DESCRIPTION IN DETAIL AS TO HOW CORNER WAS LOCATED AND IDENTIFIED OR RESTORED.

This corner was established during retracement in this area. Set corner 16.5' east of corner 33-34, as per U.S. record. A possible U.S.B.T. stump SW, but does not conform exactly to U.S. record for distance. Falls in line with road south.

SURVEYOR'S SEAL

SIGNED *Kevin A. Wittig* DATE 6-9-69  
REGISTERED LAND SURVEYOR 10068