

STATE OF MICHIGAN  
DEPARTMENT  
OF  
NATURAL RESOURCES

LAND CORNER RECORD

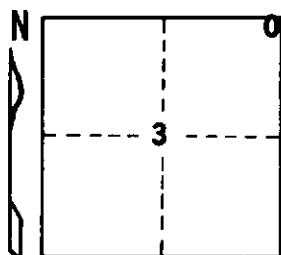
OSCODA COUNTY  
T 27 N R 2 E

DESCRIPTION OF CORNER Closing corner common to Sections 2 - 3 on N Bdry of Twp.

CORNER MONUMENT Set Dept. Monument

DATE MONUMENT PLACED AND WITNESSED 12-10-69

WITNESSES TO CORNER..... \_\_\_\_\_



7" W. Pine S 58 W 33.6'

6" W. Pine N 88 E 5.5'

AND \_\_\_\_\_

CIRCLE CORNER REGISTERED

DESCRIPTION IN DETAIL AS TO HOW CORNER WAS LOCATED AND IDENTIFIED OR RESTORED.

This corner was restored during a retracement of T28N-R2E. Set corner from U.S.B.T. which was identified in a 1958 reconnaissance for corners in this area. Previously monumented by Schaaf survey, some 5' North of our position. RePlaced Schaaf monument with Department monument. Falls about 40' North of E-W fireline road.

SURVEYOR'S SEAL

SIGNED *Ernest J. Ostling* DATE 12-15-69  
REGISTERED LAND SURVEYOR #10068

DISTRIBUTION:

County Courthouse  
Area Forester (Regions I & II)  
District or Region Surveyor  
Forestry Div., Lansing

R 4047  
Rev. 10/68