

MICHIGAN
DEPARTMENT OF CONSERVATION
FORESTRY DIVISION

LAND CORNER RECORD

T. 27 N.R. 3 E

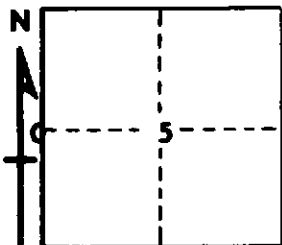
Oscoda COUNTY

DESCRIPTION OF CORNER 1/4 corner common to Sections 5-6

CORNER MONUMENT Set Cons. Dept. Mon.

DATE MONUMENT PLACED AND WITNESSED 11/7/68

WITNESSES TO CORNER.....



5" Aspen N 30 E 82.1'

6" J. Pine N 55 W 32.7'

AND

CIRCLE CORNER REGISTERED

DESCRIPTION IN DETAIL AS TO HOW CORNER WAS LOCATED AND IDENTIFIED OR RESTORED.

This corner was set by proportionate measurement between section corners, during a survey in this area. Unable to identify anything for a previous corner.

SURVEYOR'S SEAL

SIGNED *Kenneth R. Ostling* DATE 11/27/68
REGISTERED LAND SURVEYOR #10068