

MICHIGAN
DEPARTMENT OF CONSERVATION
FORESTRY DIVISION

LAND CORNER RECORD

T. 27 N.R. 3 E

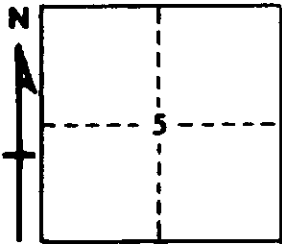
Oscoda COUNTY

DESCRIPTION OF CORNER 1/4 corner common to Sections 5-8

CORNER MONUMENT Set Cons. Dept. Mon.

DATE MONUMENT PLACED AND WITNESSED 11/14/68

WITNESSES TO CORNER.....



* 10" J. Pine S 33 E 24.1'

10" J. Pine N 35 E 21.0'

AND

* Old witness (Caldwell)

CIRCLE CORNER REGISTERED

DESCRIPTION IN DETAIL AS TO HOW CORNER WAS LOCATED AND IDENTIFIED OR RESTORED.

THIS CORNER WAS ESTABLISHED DURING A SURVEY IN THIS AREA. SET CORNER ON LINE OVER 1/8 AND SECTION CORNER EAST, AT RECORD MEASUREMENT FROM 1/8 CORNER, AS RETURNED IN HENNING AND CALDWELL SURVEYS. UNABLE TO LOCATE HENNING'S POST.

SURVEYOR'S SEAL

SIGNED *Kenneth D. Bell* DATE 11/27/68
REGISTERED LAND SURVEYOR
#10068