

MICHIGAN
DEPARTMENT OF CONSERVATION
FORESTRY DIVISION

LAND CORNER RECORD

T. 27 N.R. 3 E

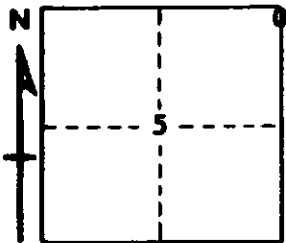
Oscoda COUNTY

DESCRIPTION OF CORNER Section corner common to Sections 4-5 on N. boundary

CORNER MONUMENT Set Cons. Dept. Mon. at 3/4" iron bar.

DATE MONUMENT PLACED AND WITNESSED 11/7/68

WITNESSES TO CORNER.....



CIRCLE CORNER REGISTERED

5" R. Oak N 21 E 18.4'

10" R. Oak S 70 W 14.1'

AND

DESCRIPTION IN DETAIL AS TO HOW CORNER WAS LOCATED AND IDENTIFIED OR RESTORED.

This corner was found during a survey in this area. Found 3/4" iron bar in proper relation to standard corner, as established by N. C. Caldwell in recent survey.

SURVEYOR'S SEAL

SIGNED *Kenneth J. Pelting* DATE 11/27/68
REGISTERED LAND SURVEYOR #10068