

NOV 03 1998

SECTION

LAND CORNER RECORDATION CERTIFICATE  
Filing Requirement of Act 74, Mich. P.A. 1970

Liber 4 pg. 297

STATE OF MICHIGAN  
OSCODA COUNTY  
FILED

15 OCT 98 2:48 P.M.

PATSY J. PETERS  
REGISTER OF DEEDS

Register of Deeds Stamp & File Number

For corners in

OSCODA

(County)

Located In:  
COMINS TWP.

Corner Code #

1. Public Land Survey

T27N R 3 E

B-3

T R

T R

T R

T R

2. Property Controlling  
in Section

S T R

S T R

3. Miscellaneous  
Property in Sec.

S T R

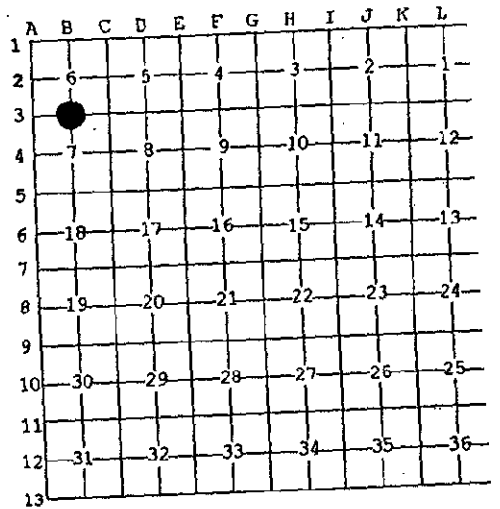
S T R

4. Lot No. \_\_\_\_\_, Recorded Plat \_\_\_\_\_

5. Private Claims \_\_\_\_\_

I, Frederick J. King, in a field survey on April 23, 1998 do hereby state that under requirements of P.A. 74, Michigan P.A. of 1970, the corner points mentioned in lines 1 and 2 above were in conformance with regulations and rules therefore as required in the current manual of survey instructions of the United States Department of the Interior, Bureau of Land Management or by a decree of a Court of Law and/or that the corner points mentioned in lines 3, 4 and 5 above were in conformance with the rules of the Michigan Board of Land Surveyors or by a Decree of a Court of Law; established, re-established, monumented, recovered, found as expressed below:

NOTE: Not more than 2 corners, all in the same town and range, may be recorded on this certificate.



A. Description of original monument and accessories and/or subsequent restoration:

B-3 - 1/4 CORNER COMMON TO SECTIONS 6 and 7

Oct. 1859 - Orig Post set by W.R.Coon, DS + S17°E - 8 lks (5.28') - 6" Beech  
Pg. 121 N26°W - 49 lks (32.24') - 10" Y Pine

Nov. 1968 - Act 74 by K.J. Ostling, PS #10068 + Set Dpt. Monument by Prop Meas between Sec Corners + Unable to locate anything definite for a previous cor + N56°E - 114.8' - 14" R. Pine  
(Rec Bk 2, Pg 182) N45°W - 54.5' - 3" R. Pine

Nov. 1968 - DNR Retracement of Sec 5 & 6 by K.J.Ostling, PS #10068 (24"x 36" Map) (NOT RECORDED)

B. Description of corner evidence found and/or method applied in restoring or reestablishing corner:

B-3 - 1/4 CORNER COMMON TO SECTIONS 6 and 7

FOUND REC DNR PIPE & CAP, WITH RED TOP POST ALONGSIDE

Corner is 0.7' East of Fnc Cor Post & in line with Fnc to East  
N.55°E. - 115' (R-114.8') - Fnd R. Pine Stump

APPROVED

County Remonumentation  
Peer Review Group

NCC 28 SEPT 98

THIS CORNER WAS APPROVED BY THE OSCODA COUNTY PEER REVIEW, ON JULY 10, 1998, AS A CAREFUL AND FAITHFUL ESTABLISHMENT OF THE POSITION OF THE CORNER.

C. Description of monument for corner and accessories established to perpetuate locating the position of the corner:

B-3 - 1/4 CORNER COMMON TO SECTIONS 6 and 7

- DNR PIPE & CAP - N.45°E. - 1.0' - Red Top Post
- N.45°E. - 21.76' - Set S&T on SE Sd of 8" Maple (Fnd Biz on SW Sd - No Spk or ID Tag)
- N.56°E. - 115' (R-114.8') R. Pine Stump (Rec Bk 2, Pg 182)
- S.60°E. - 36.17' - Set S&T on NE Sd of 12" Twin Oak
- S.20°E. - 21.01' - Set S&T on E. Sd of 10" Oak
- S.80°W. - 18.00' - Set S&T on S. Sd of 6" Maple

Signed by Frederick J. King  
Surveyor's Michigan License No. 25852

Date July 10, 1998

