

LAND CORNER RECORDATION CERTIFICATE
Filing Requirement of Act 74, Mich. P.A. 1970

Liber 4 pg 84

For corners in
Oscoda
 (County)

Located In: Corner Code #

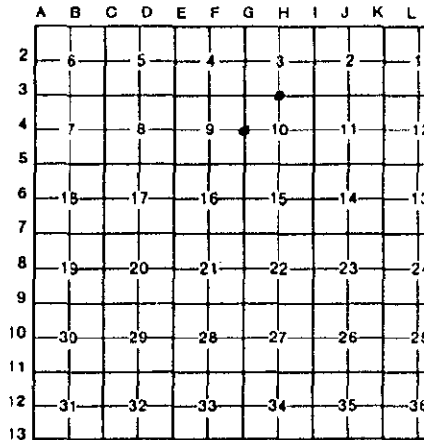
- | | | |
|---------------------------------------|--------------------------|----------------|
| 1. Public Land Survey | T <u>27N</u> R <u>4E</u> | <u>H-3</u> G-4 |
| | T _____ R _____ | _____ |
| | T _____ R _____ | _____ |
| | T _____ R _____ | _____ |
| 2. Property Controlling in Section | S _____ T _____ R _____ | _____ |
| | S _____ T _____ R _____ | _____ |
| 3. Miscellaneous Property in Sec. | S _____ T _____ R _____ | _____ |
| | S _____ T _____ R _____ | _____ |
| 4. Lot No. _____, Recorded Plat _____ | | |
| 5. Private Claims _____ | | |

STATE OF MICHIGAN
 OSCODA COUNTY
 FILED

2 AUG 95 9:43 A.M.

PATSY J. PETERS
 REGISTER OF DEEDS
 Register of Deeds Stamp & File Number

I, David B. Babbitt, in a field survey on July, 1994, do hereby certify that under requirements of P.A. 74, Michigan P.A. of 1970, the corner points mentioned in lines 1 and 2 above were in conformance with regulations and rules therefore as required in the current manual of survey instructions of the United States Department of the Interior, Bureau of Land Management or by a decree of a Court of Law and/or that the corner points mentioned in lines 3, 4 and 5 above were in conformance with the rules of the Michigan Board of Land Surveyors or by a Decree of a Court of Law; established, re-established, monumented, re-monumented, recovered, found as expressed below:



NOTE: Not more than 4 corners, all in the same town and range, may be recorded on this certificate.

A. Description of original monument and accessories and/or subsequent restoration:

H-3; Thomas Pattison, 1840
 Set wood post
 W Pine 28 - S65E - 35 Lks.
 Y Pine 6 - N70W - 14 Lks.
 C. O. Seeley, 1912
 West corrected set 1/4 post, no method given
 RR brake shoe buried at post
 Yellow Pine stump 20 - S27E - 19 Lks.

G-4; Thomas Pattison, 1840
 Set wood post
 Y Pine 18 - S80E - 16 Lks.
 Spr. Pine 8 - N50W - 45 Lks.
 George Henning survey drawing dated 1912 shows this corner as being mid point between section corners but with no indication that a monument was set.

B. Description of corner evidence found and/or method applied in restoring or reestablishing corner:

H-3 Found RR brake shoe with roots of Yellow Pine Stump in place for Seeley's NBT. Replaced brake shoe with brass capped Oscoda County Mon. and buried the brake shoe beside it. This position is accepted as a careful and faithful reestablishment of the position of the original corner.

G-4; Set this corner M.P.O.L. between the NW & SW Sec. Corners of section 10 as indicated on G. Henning's survey drawing. This position is accepted as a careful and faithful reestablishment of the position of the original corner.

APPROVED

County Remonumentation
 Peer Review Group

31 ~~JUL 95~~ 95

C. Description of monument for corner and accessories established to perpetuate locating the position of the corner:

H-3; Set 1" pipe with Oscoda County brass cap. Corner is 40' west of N-S trail Rd. & 92' South of E-W trail Rd.
 10" W. Pine - S56W - 85.05'
 5" W. Pine - S87E - 96.51'
 2" W. Pine - S64E - 75.76' (not blazed)
 8" W. Pine - S43E - 47.88'

G-4; Set 1" pipe with Oscoda County brass cap.
 14" N. Pine - N3E - 97.65'
 9" Oak - S30E - 73.00'
 18" Oak - S12W - 106.30'
 3" N. Pine - S82W - 88.44'

All bearings shown are actual compass readings and measurements are to a 3" nail with plastic cap in the side of each witness tree at the top of the root crown.

Signed by David B. Babbitt

Date Sept. 26, 1994

Surveyor's Michigan License No. 21558