

1993

COMMISSION

1993 OSCODA COUNTY RE-MONUMENTATION LAND CORNER RECORDATION CERTIFICATE Filing Requirement of Act 74, Mich. P.A. 1970

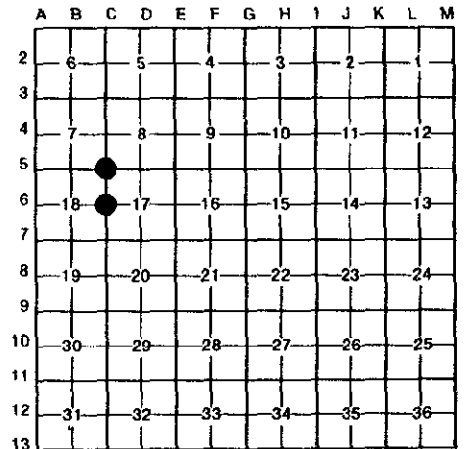
For corners in

OSCODA (County) Located In: GREENWOOD TWP. Corner Code # C-5, C-6. 1. Public Land Survey T 28N R 1E. 2. Property Controlling in Section S T R. 3. Miscellaneous Property in Sec. S T R. 4. Lot No. Recorded Plat. 5. Private Claims.

Liber 3 Pg 169

FILED At 1:21 o'clock P M Date 12-8 19 93 Clerk/Register of Deeds Register of Deeds Stamp File Number

I, Frederick J. King, in a field survey on September, 19 93, do hereby certify that under requirements of P.A. 74, Michigan P.A. of 1970, the corner points mentioned in lines 1 and 2 above were in conformance with regulations and rules therefore as required in the current manual of survey instructions of the United States Department of the Interior, Bureau of Land Management or by a decree of a Court of Law and/or that the corner points mentioned in lines 3, 4 and 5 above were in conformance with the rules of the Michigan Board of Land Surveyors or by a Decree of a Court of Law; established, re-established, monumented, re-monumented, recovered, found as expressed below:



NOTE: Not more than 4 corners, all in the same town and range, may be recorded on this certificate.

A. Description of original monument and accessories and/or subsequent restoration:

- C-5 Cor. Common to Sec. 7, 8, 17 & 18, T.28 N., R.1 E. Orig. Post by W. Coon - Dec. 1839 N:18°E.-66 lks (43.56') Y. Pine S:20½°W-41 lks (27.06') Spr. Pine 1940 - Un-Rec. Sur. by G. Henning - Meas. Sec. 7,8,17 & 18 - Set Oak Post,-16' N. of Fire Lane - N37°E 89½ lks(59.07') 5" J.Pine, N53½°W-130 lks(85.8') 8' J.Pine, S12½°W-39 lks(25.74') 10" J. Pine 1967 - Un-Rec. Sur. by H. Dorsey for Co. Pwr. Co.- Set T Iron @ Remains of Old Md. Post, SSE 20.09'-6" J.Pine, W. 32.38' 7" J.Pine, ENE 7.48' J.Pn ACT 74 - Rec. Bk 1, Pg 163 - K. Ostling set DNR P & C
- C-6 1/4 Cor. Common to Sec. 17 & 18, T.28 N., R.1 E. Orig. Post by W. Coon - Dec. 1839 S:67°E.- 26 lks (17.16') Y. Pine N:59°W.- 10 lks (6.60') Y. Pine 1940 - Un-Rec. Sur. by G. Henning - Meas Sec. 7,8,17 & 18 - Did not establish this corner 1967 - Un-Rec. Sur. by H. Dorsey for Co. Pwr. Co.- Meas. Sec. 17 - Did not establish this corner ACT 74 - Rec. Bk. 1, Pg. 163 - K. Ostling set DNR Pipe & Cap by Prop. Meas. - S.70°W. 25.5'- 7" Birch S:50°E. 3.0'- 10" J. Pine (July 1975)

B. Description of corner evidence found and/or method applied in restoring or reestablishing corner:

- C-5 Cor. Common to Sec. 7, 8, 17 & 18, T.28 N., R.1 E. Fnd. Rec. DNR Pipe & Cap with R.T. Post (Set July 1975 by K. Ostling) Fnd. Rec. Ostling Blaze - S.25°E. 14.9'-4" Map.
- C-6 1/4 Cor. Common to Sec. 17 & 18, T.28 N., R.1 E. Fnd. Rec. DNR Pipe & Cap with R.T. Post Fnd. Rec. Ostling Blaze- S.50°E.- 3.0'- 10" J. Pine (Now Dead)

PREVIOUS COUNTY SURVEYORS HAVE INDICATED THAT THIS TWP. NOTES ARE FRADULANT-NO EVIDENCE OF ORIGINAL SURVEY FND.

PREVIOUS COUNTY SURVEYORS HAVE INDICATED THAT THIS TWP. NOTES ARE FRADULANT-NO EVIDENCE OF ORIGINAL SURVEY FND.

Approved by Oscoda County Peer Review on October 25, 1993, as a careful and faithful establishment of the position of the corner.

Approved by Oscoda County Peer Review on October 25, 1993, as a careful and faithful establishment of the position of the corner.

C. Description of monument for corner and accessories established to perpetuate locating the position of the corner:

- C-5 Cor. Common to sec. 7, 8, 17 & 18, T.28 N., R.1 E. Fnd. Rec. DNR Pipe & Cap (Bk. 1, Pg. 163) Corner is ±19' S. of the C.L. of Williams Rd. (Dirt) N05°E. - 8.63' - Set Tag E. Sd. 4" Oak N.30°E.- 44.88'- Set Tag SE Sd. 6" Oak S.25°E.- 15.12'- Set Tag W. Sd. 10" Twin Oak N.45°W.- 13.55'- Set Tag NE Sd. 8" Oak R.T. Post Alongside Corner
- C-6 1/4 Cor. Common to Sec. 17 & 18, T.28 N., R.1 E. Fnd. Rec. DNR Pipe & Cap (Bk. 1, Pg. 163) N.30°E. - 75.30' - Set Tag W. Sd. 8" J. Pine N.45°E. - 1.74' - Set Tag NW Sd. R.T., Post S.75°E. - 39.65' - Set Tag N. Sd. 12" J. Pine S.40°E. - 31.58' - Set Tag W. Sd. 6" Elm

NOTE: All Witnesses Marked with Db1. Headed Nails & I.D. Tag #25852

Signed by Frederick J. King Surveyor's Michigan License No. 25852

Date Dec. 7, 1993

