

RECORDED

1893

1993 OSCODA COUNTY RE-MONUMENTATION
LAND CORNER RECORDATION CERTIFICATE
Filing Requirement of Act 74, Mich. P.A. 1970

For corners in

COMMISSION

OSCODA

(County)

Located In:

Corner Code #

GREENWOOD TWP.

- 1. Public Land Survey T 28N R 1E C-11
T 28N R 1E C-12
T R
T R
- 2. Property Controlling S T R
in Section S T R
- 3. Miscellaneous S T R
Property in Sec. S T R

Liber 3 pg 172

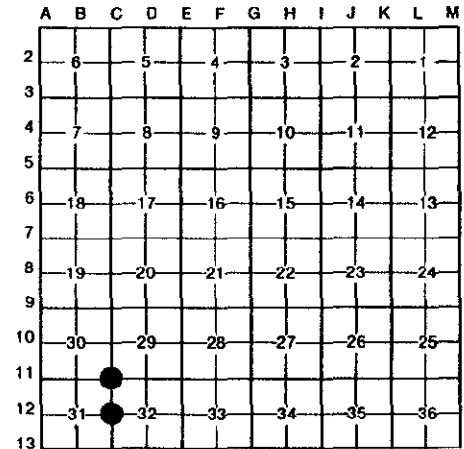
FILED

At 1:24 o'clock P M

Date 12-8 19 93

Clerk/Register of Deeds
Oscoda County, Michigan
Register of Deeds Stamp & File Number

- 4. Lot No. , Recorded Plat
- 5. Private Claims



I, Frederick J. King, in a field survey on September, 19 93, do hereby certify that under requirements of P.A. 74, Michigan P.A. of 1970, the corner points mentioned in lines 1 and 2 above were in conformance with regulations and rules therefore as required in the current manual of survey instructions of the United States Department of the Interior, Bureau of Land Management or by a decree of a Court of Law and/or that the corner points mentioned in lines 3, 4 and 5 above were in conformance with the rules of the Michigan Board of Land Surveyors or by a Decree of a Court of Law; established, re-established, monumented, re-monumented, recovered, found as expressed below:

NOTE: Not more than 4 corners, all in the same town and range, may be recorded on this certificate.

A. Description of original monument and accessories and/or subsequent restoration:

- C-11 Cor. Common to Sec. 29, 30, 31 & 32, T.28 N., R.1 E. C-12 1/4 Cor. Common to Sec. 31 & 32, T.28 N., R.1 E.
 Orig. Post by W. Coon - Dec. 1839
 S.40 $\frac{1}{2}$ °W. - 63 lks (41.58') Y. Pine
 N.38°E. - 70 lks (46.20') Y. Pine
 1962 - Un-Rec. Sur. by K. Ostling of entire Sec. 32
 States he fnd. Old Stk Bottom from 2 Old NBTs noted on DNR notes from 1938
 DNR Witness Sheet - Rec. Bk. 2, Pg. 201, K.Ostling
 Set DNR Pipe & Cap @ Old Stake location
 N.45°W. - 14.5' - 7" J. Pine
 S.24 $\frac{1}{2}$ °W. - 15.9' - 7" J. Line
 S.40 $\frac{1}{2}$ °E. - 17.3' - 7" J. Pine
- C-12 1/4 Cor. Common to Sec. 31 & 32, T.28 N., R.1 E.
 Orig. Post by W. Coon - Dec. 1839
 S.04°E. - 9 lks (5.94') Tam.
 N.10°W. - 14 lks (9.24') Tam.
 1962 - Un-Rec. Sur. by K. Ostling of entire Sec. 32
 Did not establish or witness this corner
 ACT 74 Rec. Bk. 1, Pg. 272 - K. Ostling set DNR Pipe & Cap by Prop. Meas. (Jan. 1982)
 N.81°W. - 16.5' - 5" P. Pine
 S.49°W. - 18.3' - 6" J. Pine

B. Description of corner evidence found and/or method applied in restoring or reestablishing corner:

- C-11 Cor. Common to Sec. 29, 30, 31 & 32, T.28 N., R.1 E. C-12 1/4 Cor. Common to Sec. 31 & 32, T.28 N., R.1 E.
 Fnd. Rec. DNR Pipe & Cap with R.T. Post
 Fnd. Rec. Ostling Blaze - S.25°E.(M)-17.2'- 7" J. Pine
 Fnd. Rec. Ostling Blaze - S.35°W.(M)-15.9'- 7" J. Pine
- C-12 1/4 Cor. Common to Sec. 31 & 32, T.28 N., R.1 E.
 Fnd. Rec. DNR Pipe & Cap with R.T. Post
 Area has been clear cut - No Ostling Wit. Fnd.

PREVIOUS COUNTY SURVEYORS HAVE INDICATED THAT THIS TWP. NOTES ARE FRADULANT-NO EVIDENCE OF ORIGINAL SURVEY FND.

PREVIOUS COUNTY SURVEYORS HAVE INDICATED THAT THIS TWP. NOTES ARE FRADULANT-NO EVIDENCE OF ORIGINAL SURVEY FND.

Approved by Oscoda County Peer Review on October 25, 1993, as a careful and faithful establishment of the position of the corner.

Approved by Oscoda County Peer Review on October 25, 1993, as a careful and faithful establishment of the position of the corner.

C. Description of monument for corner and accessories established to perpetuate locating the position of the corner:

- C-11 Cor. Common to Sec. 29, 30, 31 & 32, T.28 N., R.1 E. C-12 1/4 Cor. Common to Sec. 31 & 32, T.28 N., R.1 E.
 Fnd. Rec. DNR Pipe & Cap (Bk. 2, Pg. 201)
 N.75°E. - 39.50' - Set Tag NW Sd. Pwr. Pole @ Bend
 S.25°E. - 17.70' - Set Tag SW Sd. 12" J. Pine
 S.35°W. - 15.91' - Set Tag E. Sd. 8" J. Pine
 S.40°W. - 1.77' - Set Tag SE Sd. R.T. Post
 Cor. is $\pm 11\frac{1}{2}$ ' S. of Pwr. Line to E AND $\pm 37\frac{1}{2}$ ' W. of Pwr. Line to S.
- C-12 1/4 Cor. Common to Sec. 31 & 32, T.28 N., R.1 E.
 Fnd. Rec. DNR Pipe & Cap (Bk. 1, Pg. 272)
 S.80°E. - 0.20' - Set Tag N. Sd. R.T. Post
 S.50°W. - 398.24' - Set Tag NW Sd. Pwr. Pole
 N.65°W. - 215.13' - Set Tag NE Sd. Pwr. Pole
 N.15°W. - 334.79' - Set Tag SW Sd. Pwr. Pole

NOTE: All Witnesses Marked with Db1. Headed Nails & I.D. Tag #25852

Signed by Frederick J. King
Surveyor's Michigan License No. 25852

Date Dec. 7, 1993

