

RECORDED

1993

COMMISSION

1993 OSCODA COUNTY RE-MONUMENTATION LAND CORNER RECORDATION CERTIFICATE Filing Requirement of Act 74, Mich. P.A. 1970

For corners in

OSCODA (County)

Located In:

Corner Code #

GREENWOOD TWP.

- 1. Public Land Survey T 28N R 1E
2. Property Controlling in Section S T R
3. Miscellaneous Property in Sec. S T R

D-7

Liber 3 pg 174

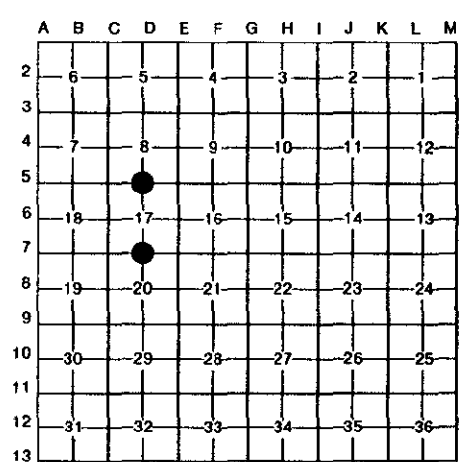
FILED

At 1:26 o'clock P M Date 12-8 19 93

Clerk/Register of Deeds Oscoda County, Michigan Register of Deeds Stamp & File Number

- 4. Lot No. Recorded Plat
5. Private Claims

I, Frederick J. King, in a field survey on September 19 93 do hereby certify that under requirements of P.A. 74, Michigan P.A. of 1970, the corner points mentioned in lines 1 and 2 above were in conformance with regulations and rules therefore as required in the current manual of survey instructions of the United States Department of the Interior, Bureau of Land Management or by a decree of a Court of Law and/or that the corner points mentioned in lines 3, 4 and 5 above were in conformance with the rules of the Michigan Board of Land Surveyors or by a Decree of a Court of Law; established, re-established, monumented, re-monumented, recovered, found as expressed below:



NOTE: Not more than 4 corners, all in the same town and range, may be recorded on this certificate.

A. Description of original monument and accessories and/or subsequent restoration:

D-5 1/4 Cor. Common to Sec. 8 & 17, T.28 N., R.1 E. Orig. Post by W. Coon - Dec. 1839 S.14°E.- 3 lks (1.98') Spr. Pine N.10 1/2°W- 21 lks (13.86') Spr. Pine 1940 - Un-Rec Sur. by G. Henning - Meas Sec. 7,8,17 & 18 Set Oak Post: N.26°W.- 85 1/2 lks(56.43')- 5" B. Oak S.54 1/2°W.- 55 lks (36.30')- 8" W. Oak 1967 - Un-Rec. Sur. by H. Dorcey for Co. Pwr. Co. - Fnd. & Accepted a 1" Pipe N - 5.35'- 6" W. Oak, WNW- 31.21'- 8" W. Oak, SSW- 26.85'- 8" W. Oak 1981 - Un-Rec. Sur. by D. Marfatt-Fnd. 1 1/2" Well Pt. & 1" Pipe, S60°W-35.7'-12"Oak, S.35°E-37.0'-6"Oak S31°W-26.96'-10"Oak NO ACT 74 RECORDED

D-7 1/4 Cor. Common to Sec. 17 & 20, T.28 N., R.1 E. Orig. Post by W. Coon - Dec. 1839 N1°E - 82 lks (54.12') Y. Pine S4°W - 65 lks (42.90') Y. Pine 1940 - Un-Rec. Sur. by G. Henning - Meas Sec.7,8,17 & 18 Did not establish or wit. this corner 1967 - Un-Rec. Sur. by H. Dorcey for Co. Pwr. Co.- Fnd. Sq. Wd. Post & Replcd with T Iron, SW-32.00-10" J.Pine, SE-17.51'-8" J.Pine, NE-36.25'-8" J.Pine 1971 - Act 132 Sur.- Rec. L.1, Pg. 13-15 by N. Caldwell Meas entire Sec. 20- Did not indicate cor. evidence fnd. or wit. NO ACT 74 RECORDED FOR THIS CORNER

B. Description of corner evidence found and/or method applied in restoring or reestablishing corner:

D-5 1/4 Cor. Common to Sec. 8 & 17, T.28 N., R.1 E. Fnd. Rec. 1" Pipe with R.T. Post No Record Witnesses Found Meas. East 2659.70' (Rec-2659.79') to Cor. E-5 Agrees with H. Dorcey Survey.

D-7 1/4 Cor. Common to Sec. 17 & 20, T.28 N., R.1 E. Fnd. Oscoda County Pipe & Cap with R.T. Post No Record Witnesses Found Meas. East 2649.55' (Rec-2649.62') to Cor. E-7 Agrees with H. Dorcey Survey.

PREVIOUS COUNTY SURVEYORS HAVE INDICATED THAT THIS TWP. NOTES ARE FRADULANT-NO EVIDENCE OF ORIGINAL SURVEY FND.

PREVIOUS COUNTY SURVEYORS HAVE INDICATED THAT THIS TWP. NOTES ARE FRADULANT-NO EVIDENCE OF ORIGINAL SURVEY FND.

Approved by Oscoda County Peer Review on October 25, 1993, as a careful and faithful establishment of the position of the corner.

Approved by Oscoda County Peer Review on October 25, 1993, as a careful and faithful establishment of the position of the corner.

C. Description of monument for corner and accessories established to perpetuate locating the position of the corner:

D-5 1/4 Cor. Common to Sec. 8 & 17, T.28 N., R.1 E. Set Oscoda County Pipe & Cap @ 1" Pipe position Corner is 1/25' S. of C.L. of Williams Rd. (Dirt Rd.) S.75°E. - 9.54' - Set Tag N. Sd. 20" Oak S.10°E. - 10.88' - Set Tag W. Sd. 16" Oak S.40°W. - 11.45' - Set Tag SE Sd. 6" Maple N.65°W. - 10.90' - Set Tag NE Sd. 24" Oak

D-7 1/4 Cor. Common to Sec. 17 & 20, T.28 N., R.1 E. Fnd. Oscoda County Pipe & Cap Corner is 1/25' S. of C.L. of Henning Rd. (Dirt Rd.) N.85°E. - 11.03' - Set Tag N. Sd. 4" Oak S.10°W. - 0.98' - Set Tag W. Sd. Fnc. Cor. Post S.75°W. - 11.01' - Set Tag N. Sd. 5" Maple R.T. Post Alongside Corner.

NOTE: All Witnesses Marked with Db1. Headed Nails & I.D. Tag #25852

Signed by Frederick J. King

Date Dec. 7, 1993

Surveyor's Michigan License No. 25852

