

STATE OF MICHIGAN
DEPARTMENT
OF
NATURAL RESOURCES

LAND CORNER RECORD

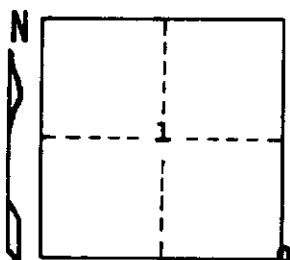
OSCODA COUNTY
T 28 N R 2 & 3 E

DESCRIPTION OF CORNER Sec. corner common to Sections 1-12-6-7

CORNER MONUMENT Set Dept. Monument

DATE MONUMENT PLACED AND WITNESSED 5-20-71

WITNESSES TO CORNER..... USBT 20" R. P. Stump N 58 W 22.3'



* 17" R. P. Stub N 80 W 17.85'

14" R. Pine (Live) S 65 E 111.8'

AND

* Old Houghton BT

CIRCLE CORNER REGISTERED

DESCRIPTION IN DETAIL AS TO HOW CORNER WAS LOCATED AND IDENTIFIED OR RESTORED.

This corner was found by E. Houghton (CCC) in the mid-1930s. He says iron pipe on corner, 2 OBTs in place. Schaaf set pipe in block of concrete. Found and rewitnessed by MSHD around 1960 (Highway Wits. all cut prior to 1970). We replaced Schaaf's pipe with Department Monument. Stump for NW OBT still in place showing face. Stump for SW OBT lying on ground (pushed over by bulldozer but not moved).

SURVEYOR'S SEAL

SIGNED

Janeth Ostling
REGISTERED LAND SURVEYOR

DATE

5-27-71

DISTRIBUTION:

10068

County Courthouse
Area Forester (Regions I & II)
District or Region Surveyor
Forestry Div., Lansing

R 4047
Rev. 10/68