

STATE OF MICHIGAN  
DEPARTMENT  
OF  
NATURAL RESOURCES

LAND CORNER RECORD

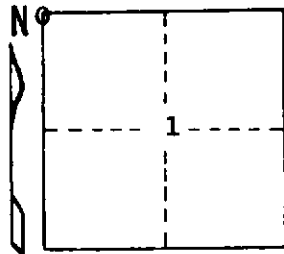
OSCODA COUNTY  
T 28 N R 2 E

DESCRIPTION OF CORNER Sec. Cor. Common to Secs. 1 and 2 on N. Bdy. of Twnshp.

CORNER MONUMENT Set Dept. Mon.

DATE MONUMENT PLACED AND WITNESSED 6-10-71

WITNESSES TO CORNER.....



8" Cedar S 64 W 16.8'

8" Tam. S 46 E 14.4'

AND

CIRCLE CORNER REGISTERED

DESCRIPTION IN DETAIL AS TO HOW CORNER WAS LOCATED AND IDENTIFIED OR RESTORED.

This corner was found by E. Houghton in Mid 1930s, previously established by unknown. Re-marked by M. Schaaf. Corner to Section 35-36, T29NR2E is 27.7' east.

SURVEYOR'S SEAL

SIGNED *Terrence H. Estling* DATE 6-17-71  
REGISTERED LAND SURVEYOR

DISTRIBUTION:

County Courthouse  
Area Forester (Regions I & II)  
District or Region Surveyor  
Forestry Div., Lansing

10068

R 4047  
Rev. 10/68